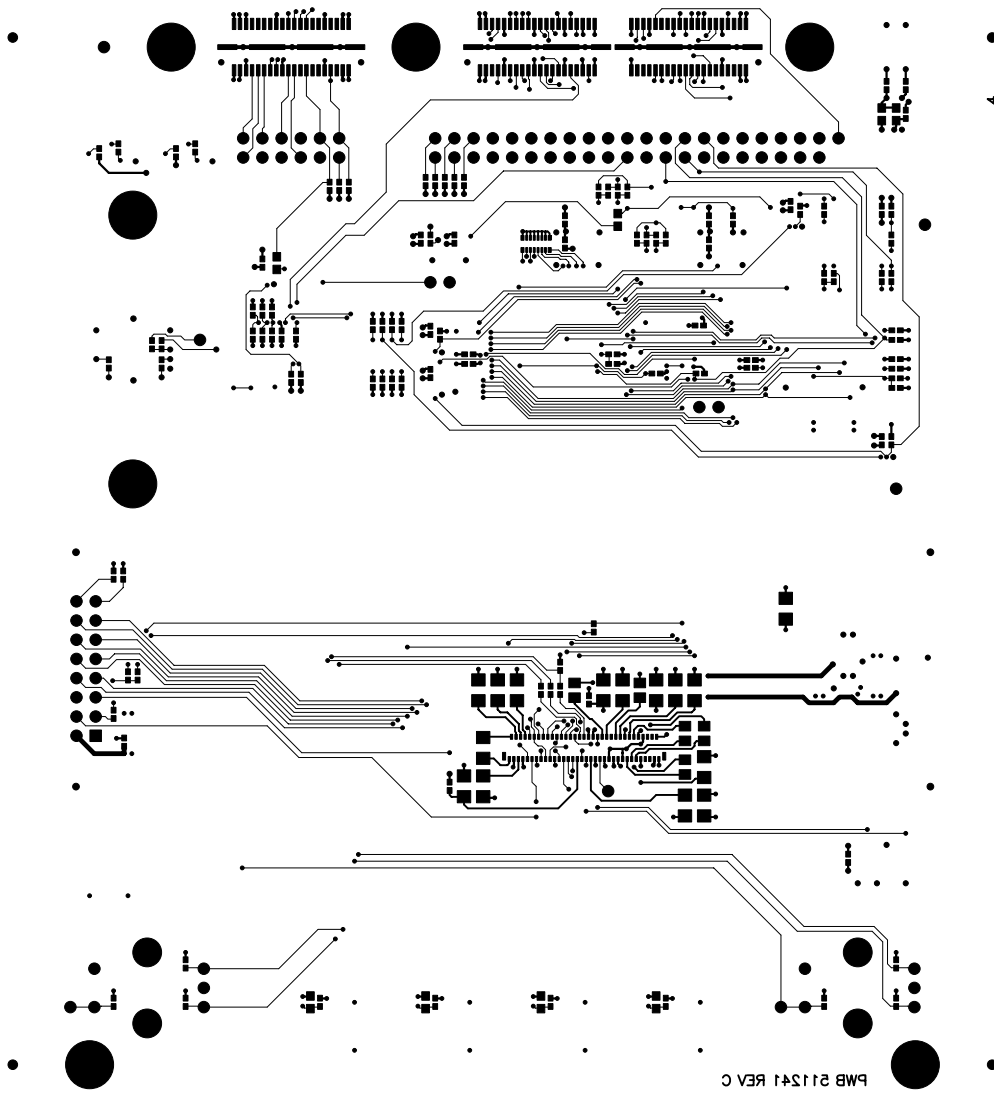


PWB 511241 REV C

S/N

ASSY 511240 REV

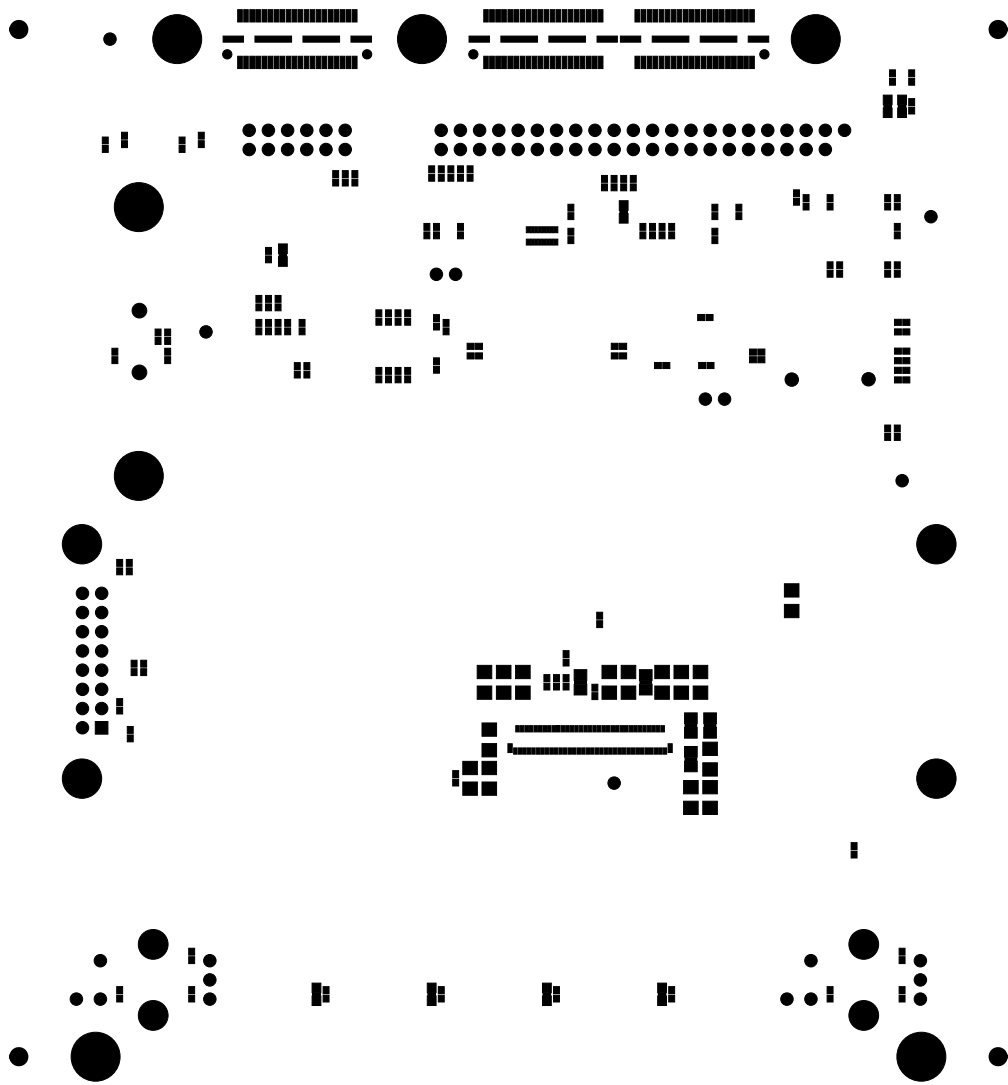


PWB 511241 REV C
9-30-08
BOTTOM SIDE - LAYER 4

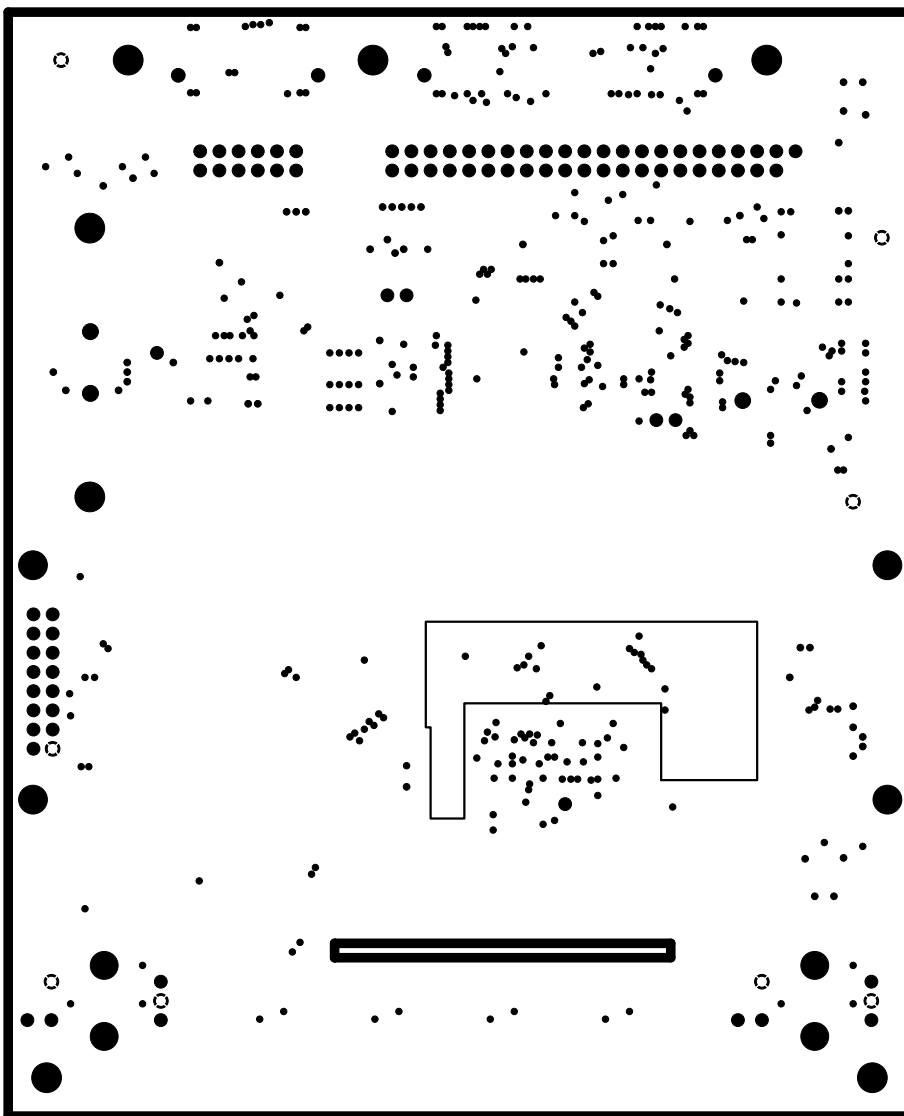
PWB 511241 REV C
 8-30-08
 BOTTOM SIDE SILKSCREEN

22Y 21340 REV

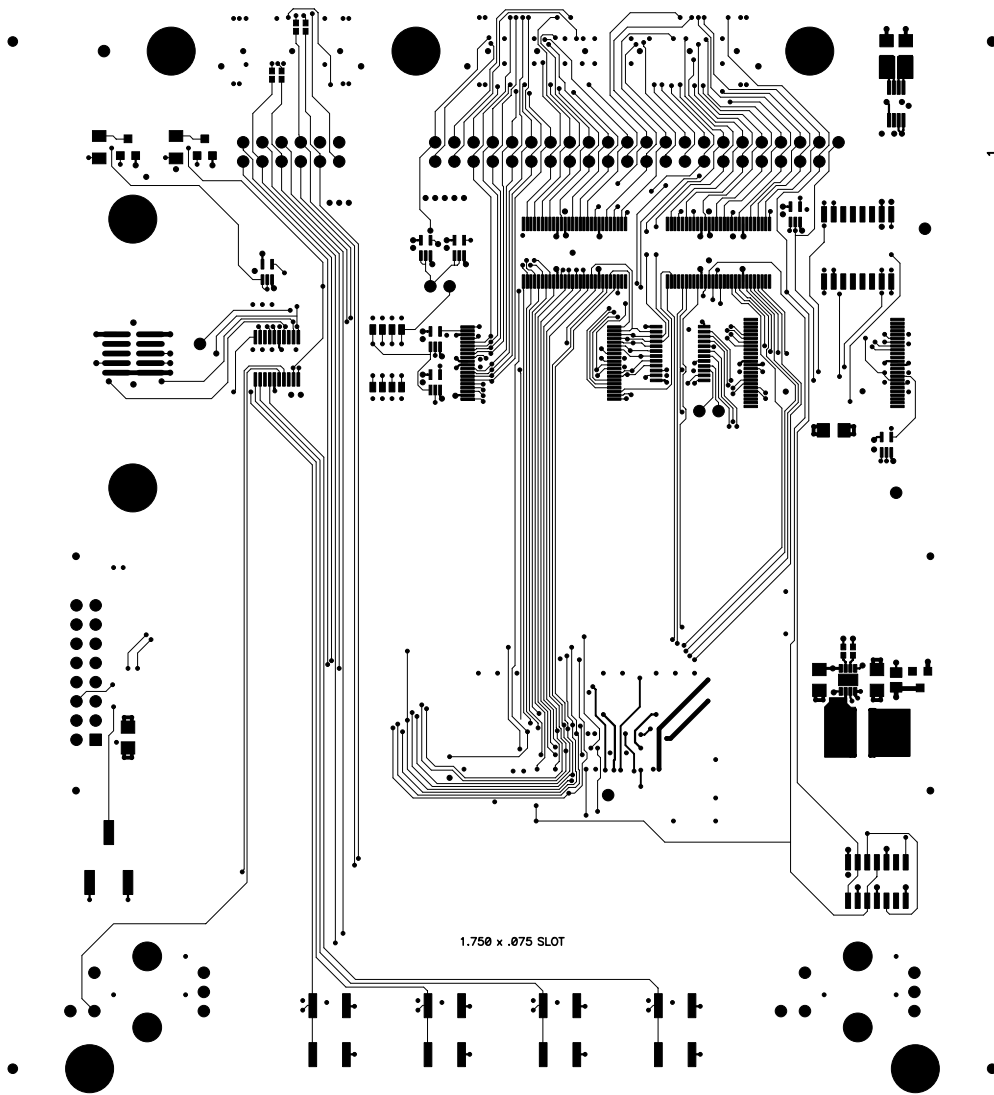




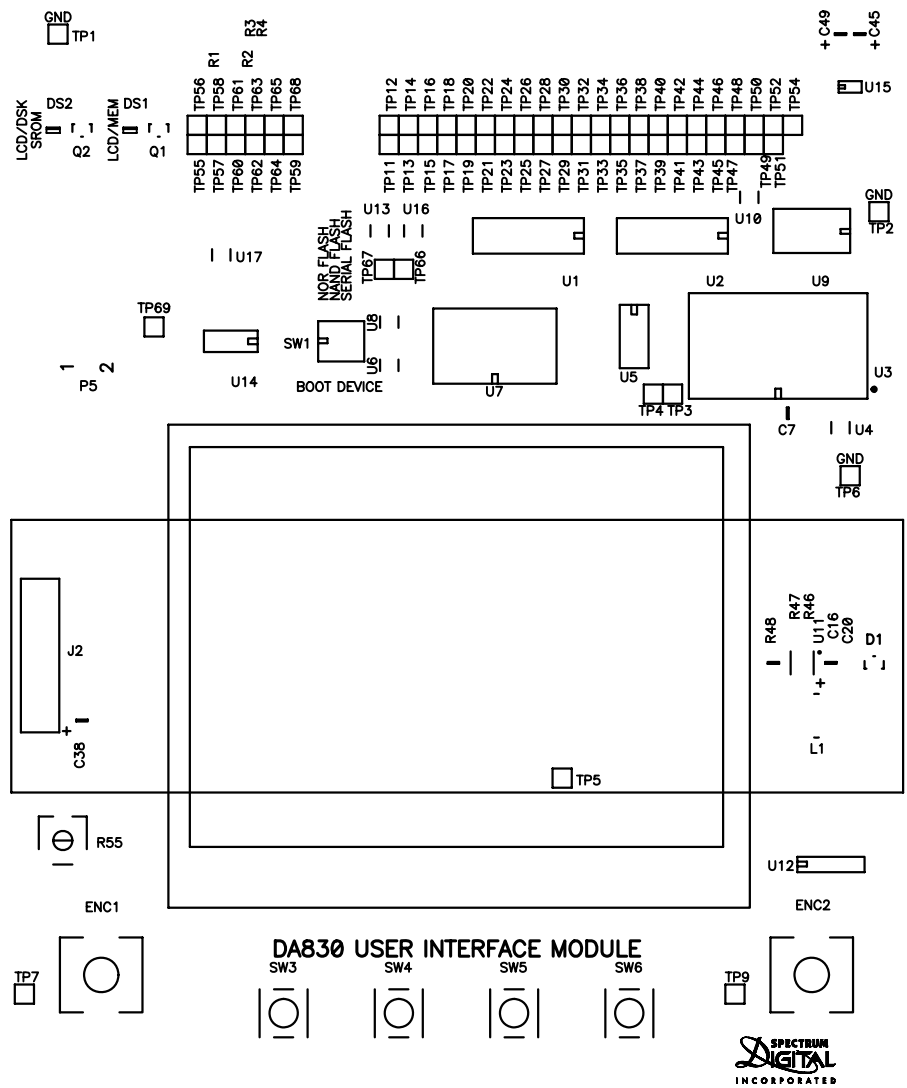
PWB 511241 REV C
9-30-08
BOTTOM SIDE SOLDERMASK



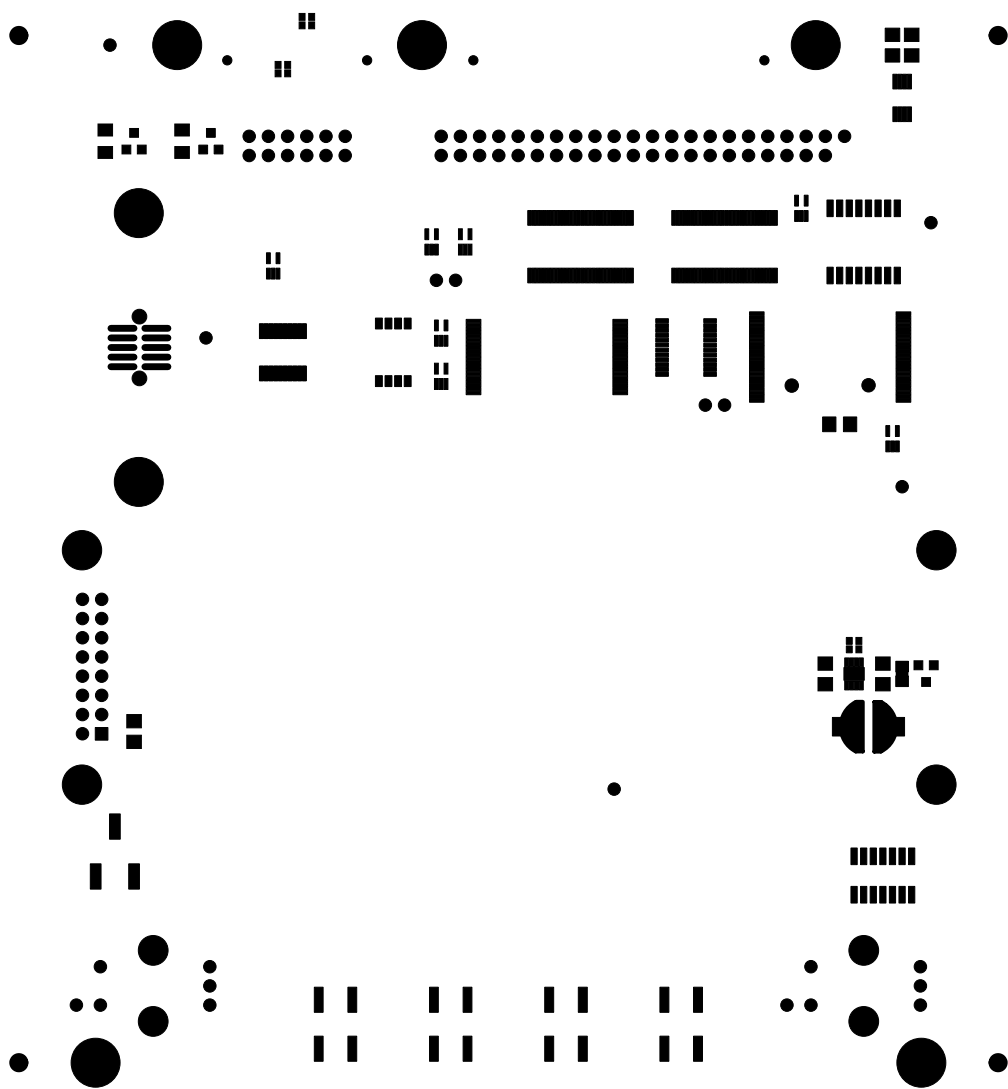
PWB 511241 REV C
9-30-08
GND PLANE - LAYER 2



PWB 511241 REV C
9-30-08
TOP SIDE - LAYER 1



PWB 511241 REV C
 9-30-08
 TOP SIDE SILKSCREEN



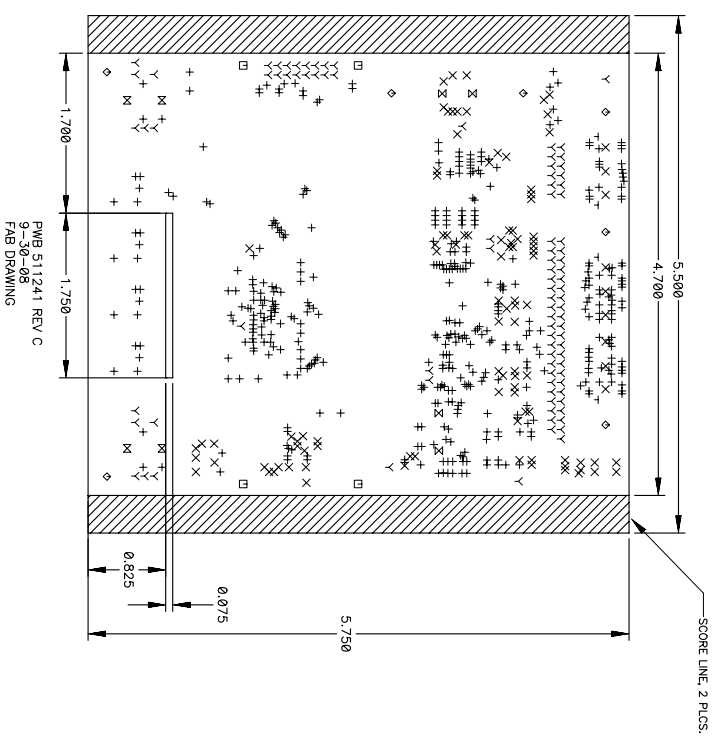
PWB 511241 REV C
9-30-08
TOP SIDE SOLDERMASK



PWB 511241 REV C
9-30-08
VCC PLANE - LAYER 3

NOTES: UNLESS OTHERWISE SPECIFIED

- 1 MATERIAL: HIGH TEMP FR4 (G>=170). THICKNESS: .062.
- 2 DIMENSIONS APPLY TO THE CENTER OF HOLES AND PADS.
- 3 MINIMUM COPPER WALL THICKNESS SHALL BE .001 FOR ALL PLATED THRU HOLES.
- 4 ALL ARTWORK VIEWED FROM COMPONENT SIDE ARE AFTER PLATING.
- 5 MAXIMUM ALLOWABLE LINE REDUCTION DUE TO PIN HOLES, NICKS AND LINE SHRINKAGE IS TO BE .20%.
- 7 INTERNAL AND EXTERNAL CORNERS TO BE .50 RADIUS MAX AT SHOP OPTION.
- 8 EDGE CONDUCTOR TABS ARE TO BE ELECTROPLATED TO A MINIMUM THICKNESS OF .0005 GOLD OVER A MINIMUM THICKNESS OF .001 NICKEL.
- 9 SOLDER MASK SHALL BE LIQUID PHOTOIMAGEABLE MATTE FINISH WITH A THICKNESS NOT TO EXCEED 1.5 MILS AND SHALL BE APPLIED TO BOTH SIDES OF BOARD OVER BARE COPPER PER IPC-SM-840, CLASS 2.
- 10 SOLDER MASK COLOR: GREEN.
- 11 EXPOSED CONDUCTOR AREAS TO BE FINISHED WITH ELECTROLESS NICKEL THICKNESS .000250 MINIMUM PLUS IMMERSION GOLD THICKNESS .000205 MINIMUM.
- 12 SILKSCREEN WITH WHITE EPOXY BASED INK PER SILKSCREEN ARTWORK.
- 13 BOARD IS TO BE 100% ELECTRICALLY TESTED.
- 14 CONTROLLED IMPEDANCE OF 55 OHMS +/- 10 OHMS TO BE MATCHED ON ALL SIGNAL LAYERS ON 5 MIL TRACES.



Drill Table

| Hole Dia (inch) | Symbol | Quantity | Plated |
|-----------------|--------|----------|--------|
| 0.010 | + | 446 | Yes |
| 0.012 | X | 105 | Yes |
| 0.038 | Y | 92 | Yes |
| 0.041 | T | 4 | No |
| 0.053 | Z | 4 | No |
| 0.115 | M | 4 | Yes |
| 0.120 | D | 4 | No |
| 0.125 | ◇ | 7 | Yes |

TABLE OF LAYERS

| NO. | DESCRIPTION | COPPER WT. |
|-----|-------------|------------|
| 11 | TOP SIDE | 1/2 OZ |
| 12 | GND PLANE | 1.0Z |
| 13 | VCC PLANE | 1.0Z |
| 14 | BOTTOM SIDE | 1/2 OZ |

PWB 511241 REV C
9-30-08
FAB DRAWING

UNLESS OTHERWISE SPECIFIED

- DIMENSIONS ARE IN INCHES
- ANGLES +/- .1°
- TOLERANCES: 2 PLACE DECIMALS +/- .02
- REMOVE ALL BURRS AND SHARP EDGES
- CONCENTRIC MACHINED DIAMETERS 0.010 RIM
- DIMENSIONAL LIMITS APPLY AFTER PROCESSES

HOLE DIAMETER TOLERANCE UNLESS OTHERWISE NOTED IN DRILL TABLE

ALL PLATED HOLES +/- .004

ALL NON-PLATED HOLES +/- .003

DWG: TOM KRAUSKOPF DATE: 9-30-08
CHK: RON PETERSON
ENG: DSSN
ENG: MGR
QA
MFG
RISE
SCALE: NONE



PWB, PRIMUS USER I/F BOARD

SIZE: DRAWING NO: 511241
REV: C

SHEET 1 OF 1