

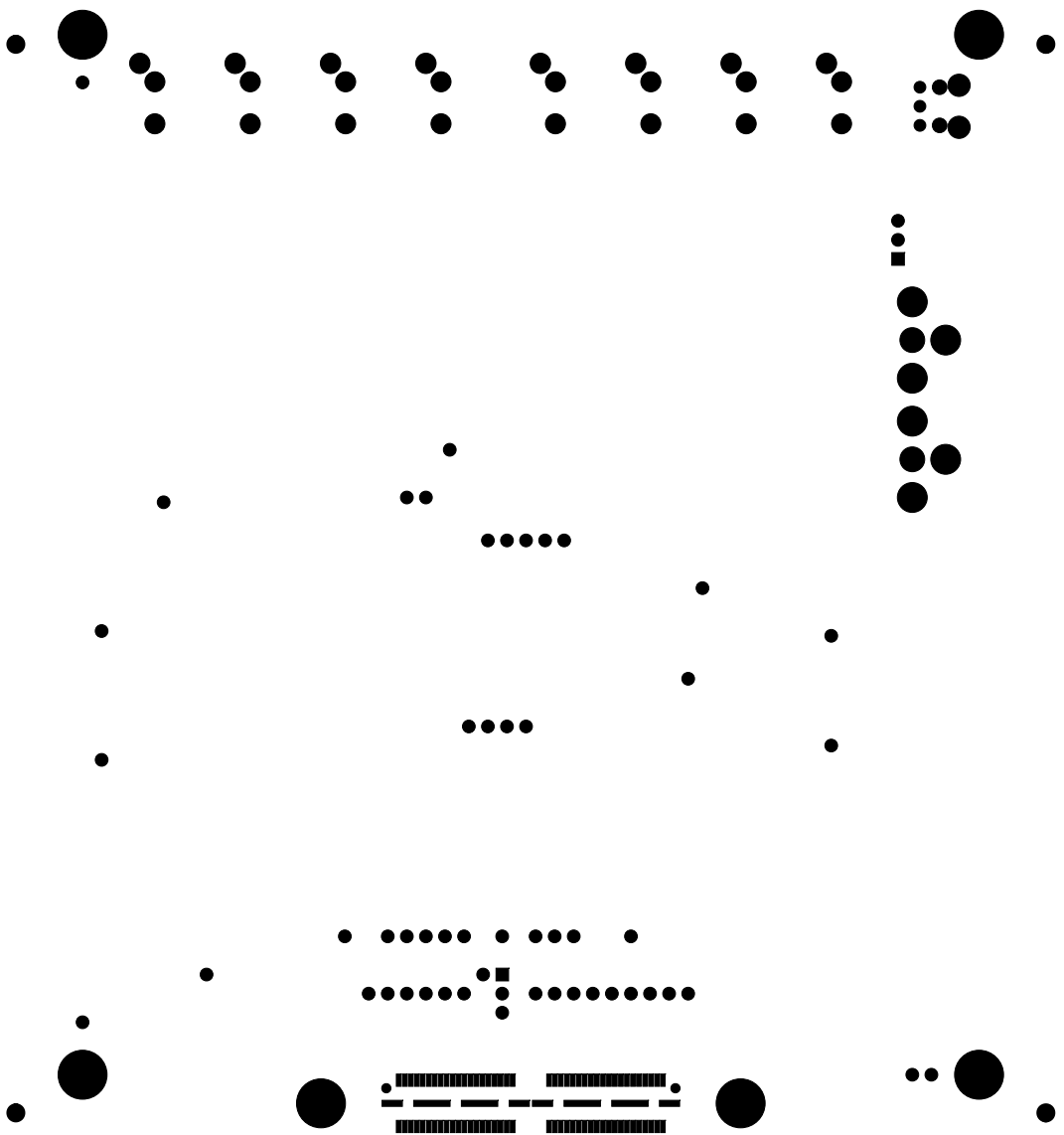
PWB 511061 REV A
7-21-08
A REV A - SIDE BOTTOM

PWB 511061 REV A
7-21-08
MOTOROLA QIP MOTTOB

88 88

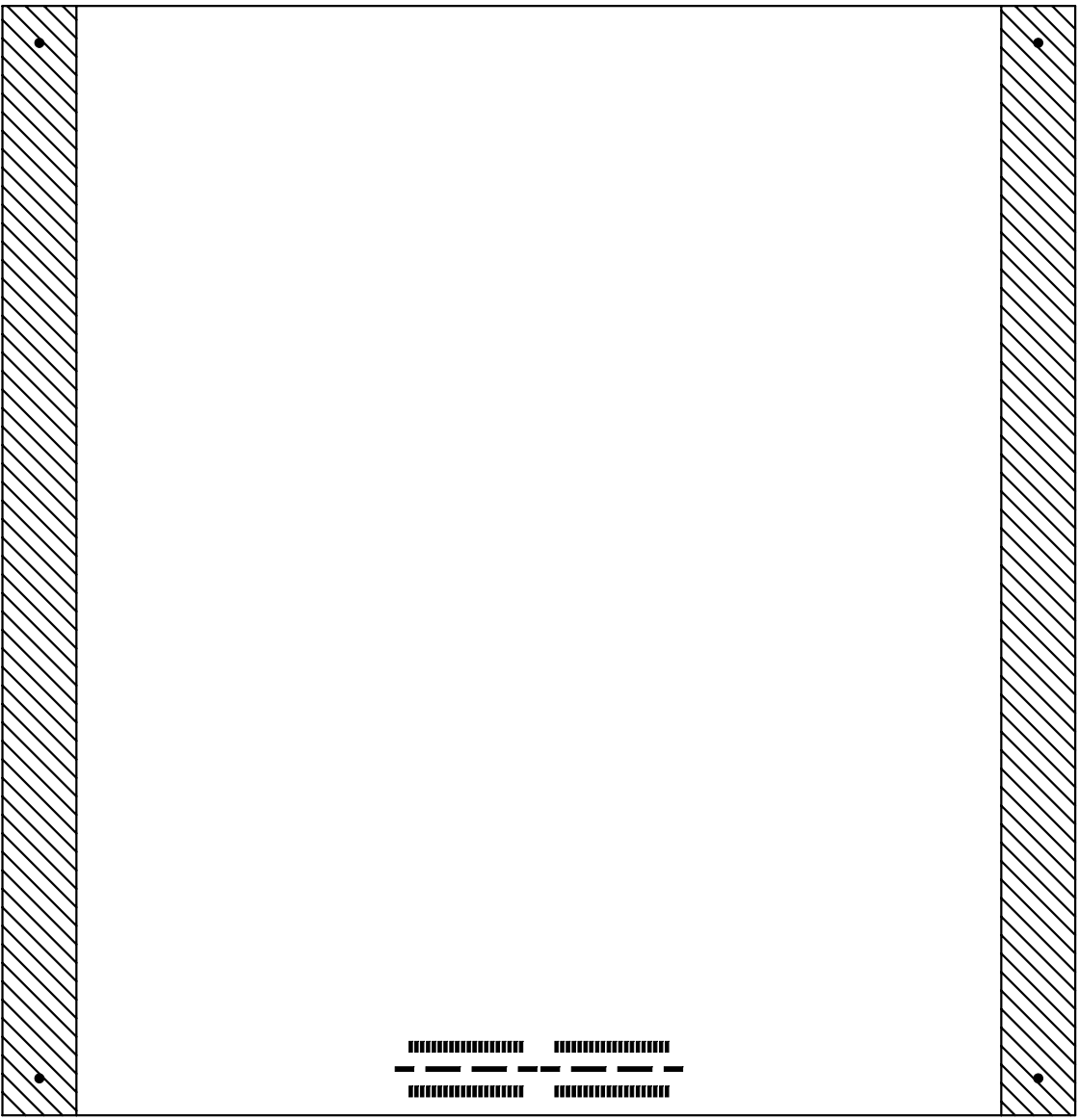
||

1 1 2 3

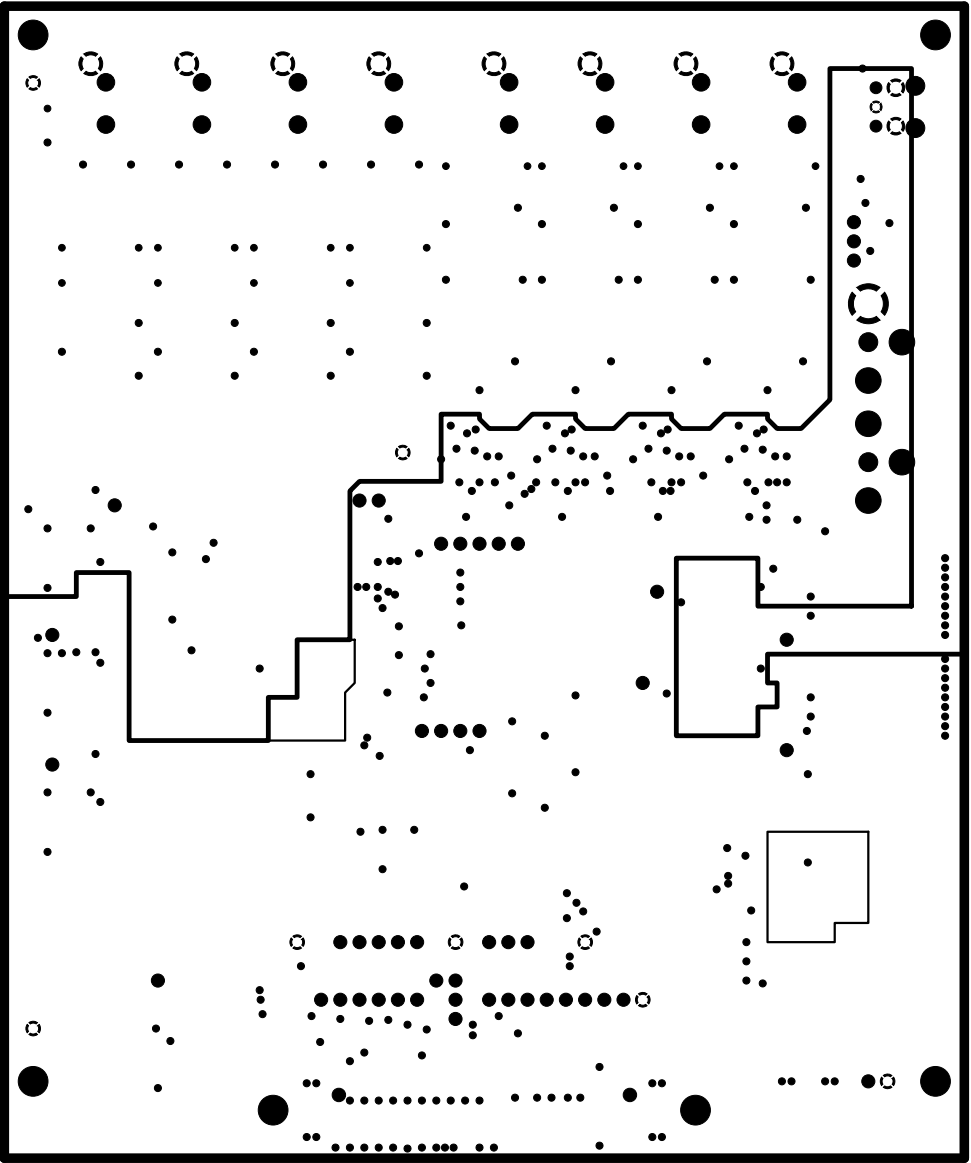


PWB 511061 REV A
 7-21-08
 K2AMP9EQJLOS 2IDE 2DIE MOTTOB

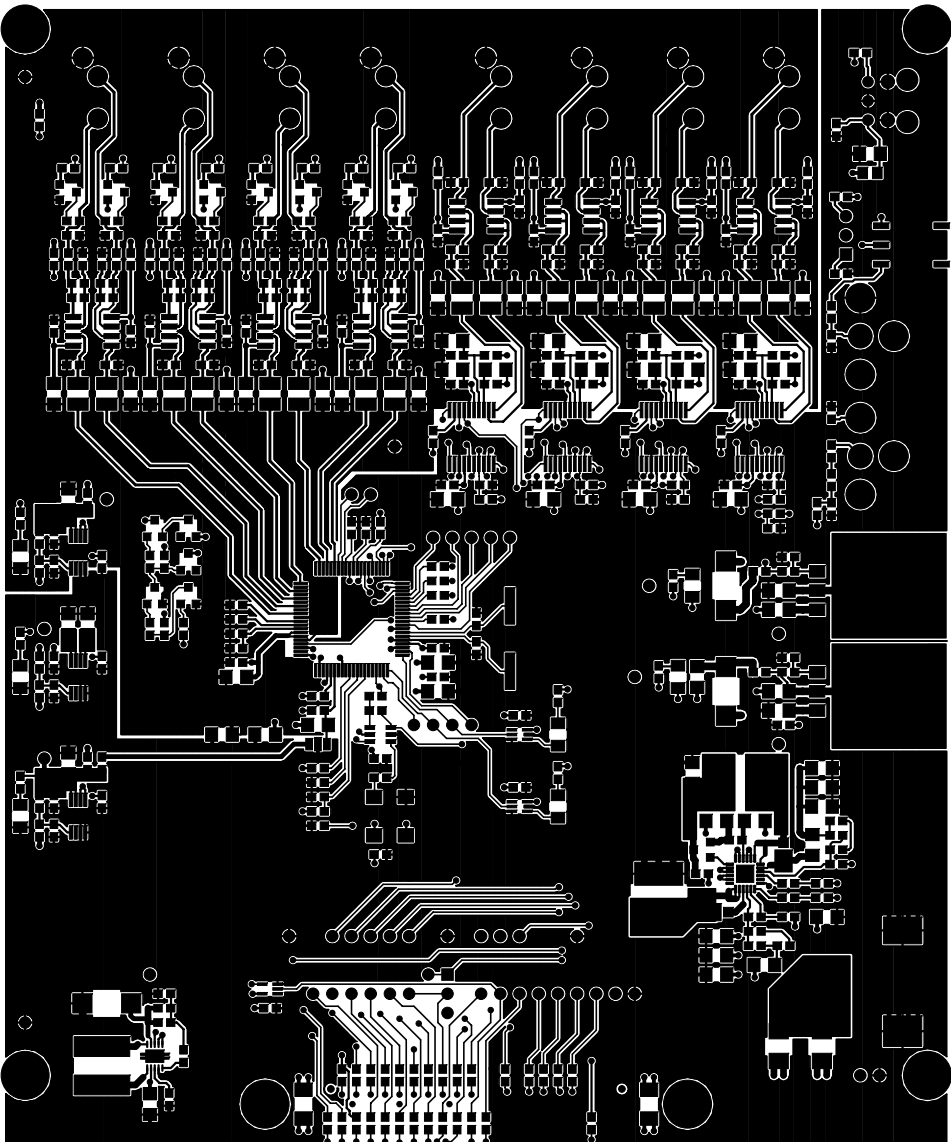
ОБЪЕКТОВ ЭДЖЕ ←
← LEADING EDGE →
→ ZONEEDGE SIDE →



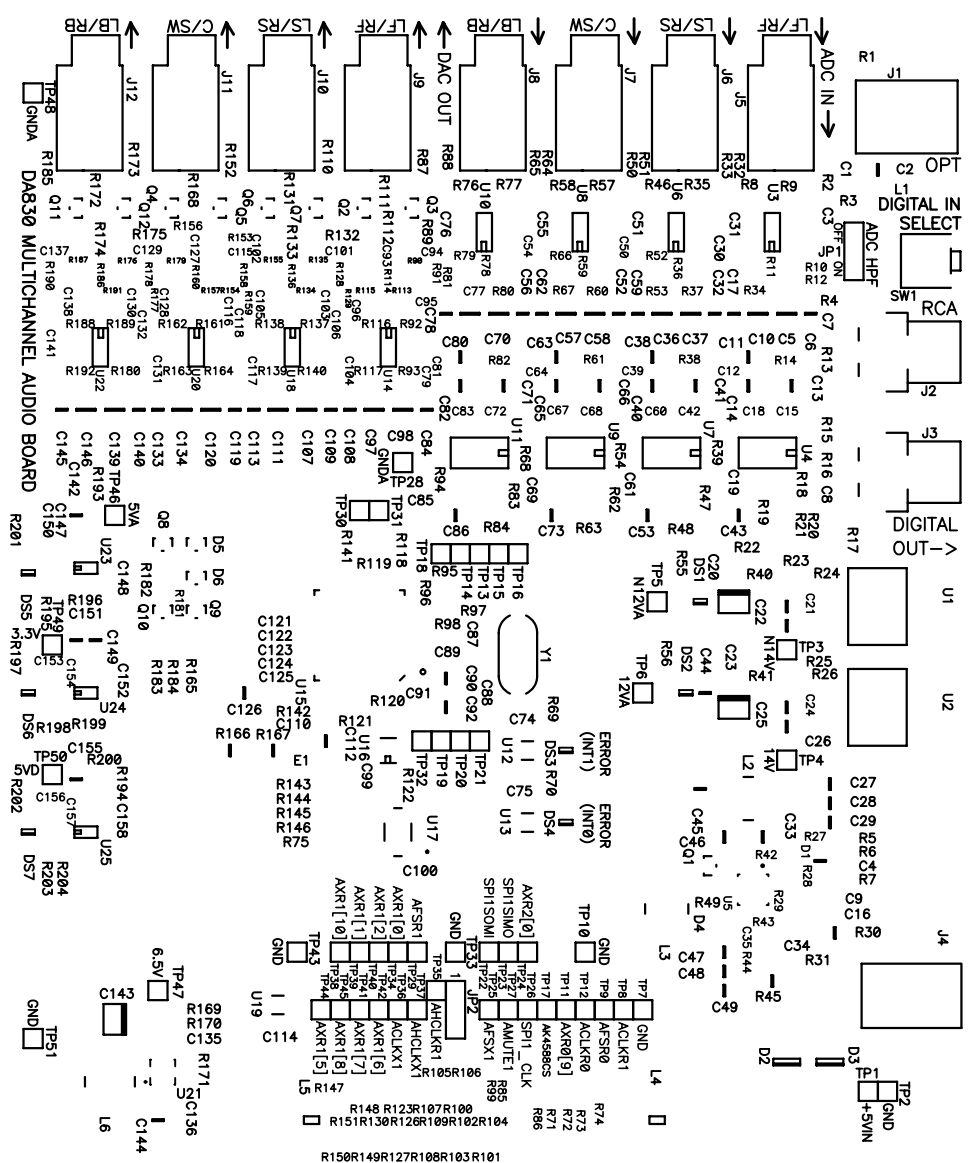
PWB 511061 REV A
7-21-08
ИТАРРАРДЛОС ЭДИС МОТТОВ



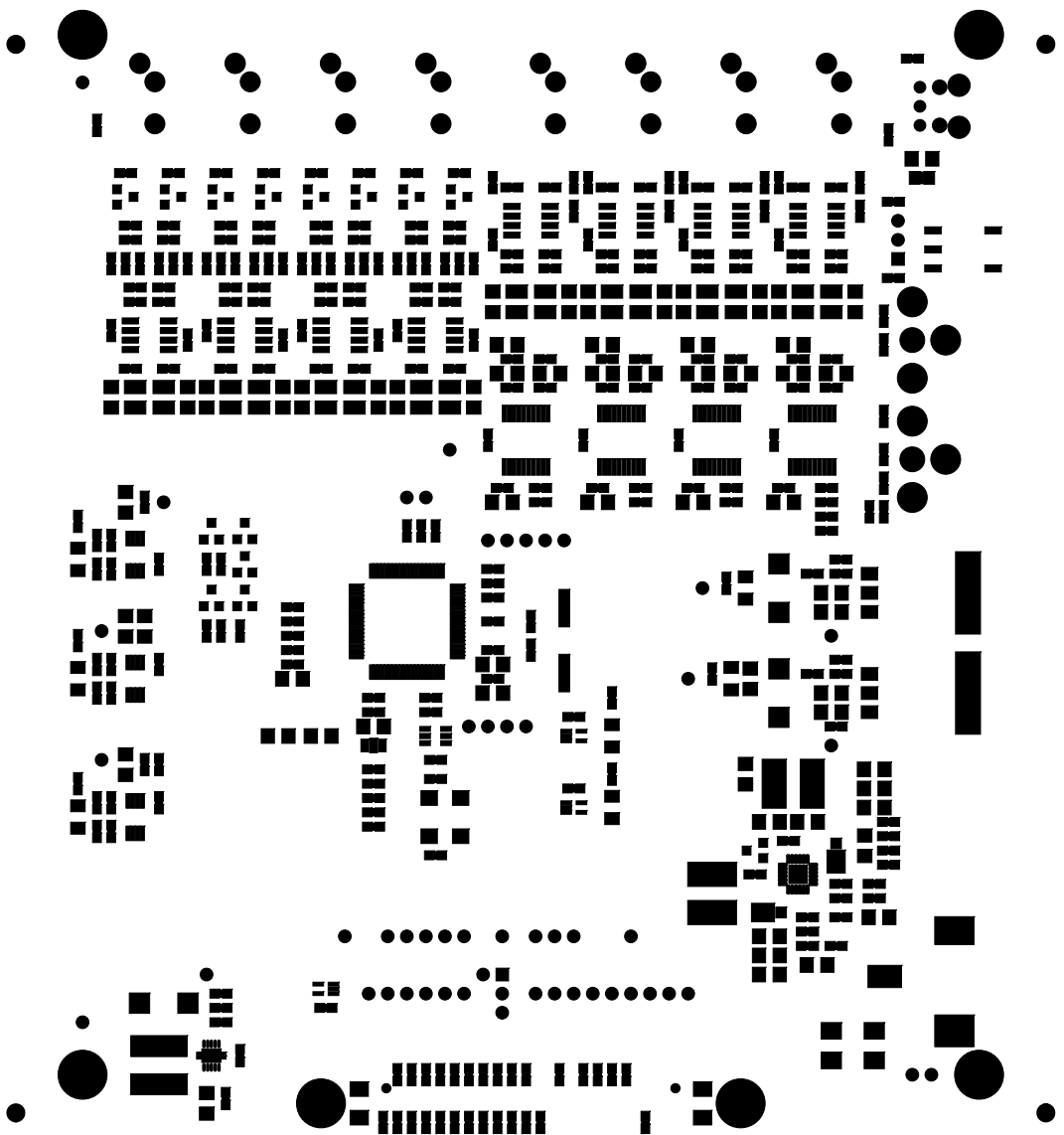
PWB 511061 REV A
7-21-08
GND PLANE - LAYER 2



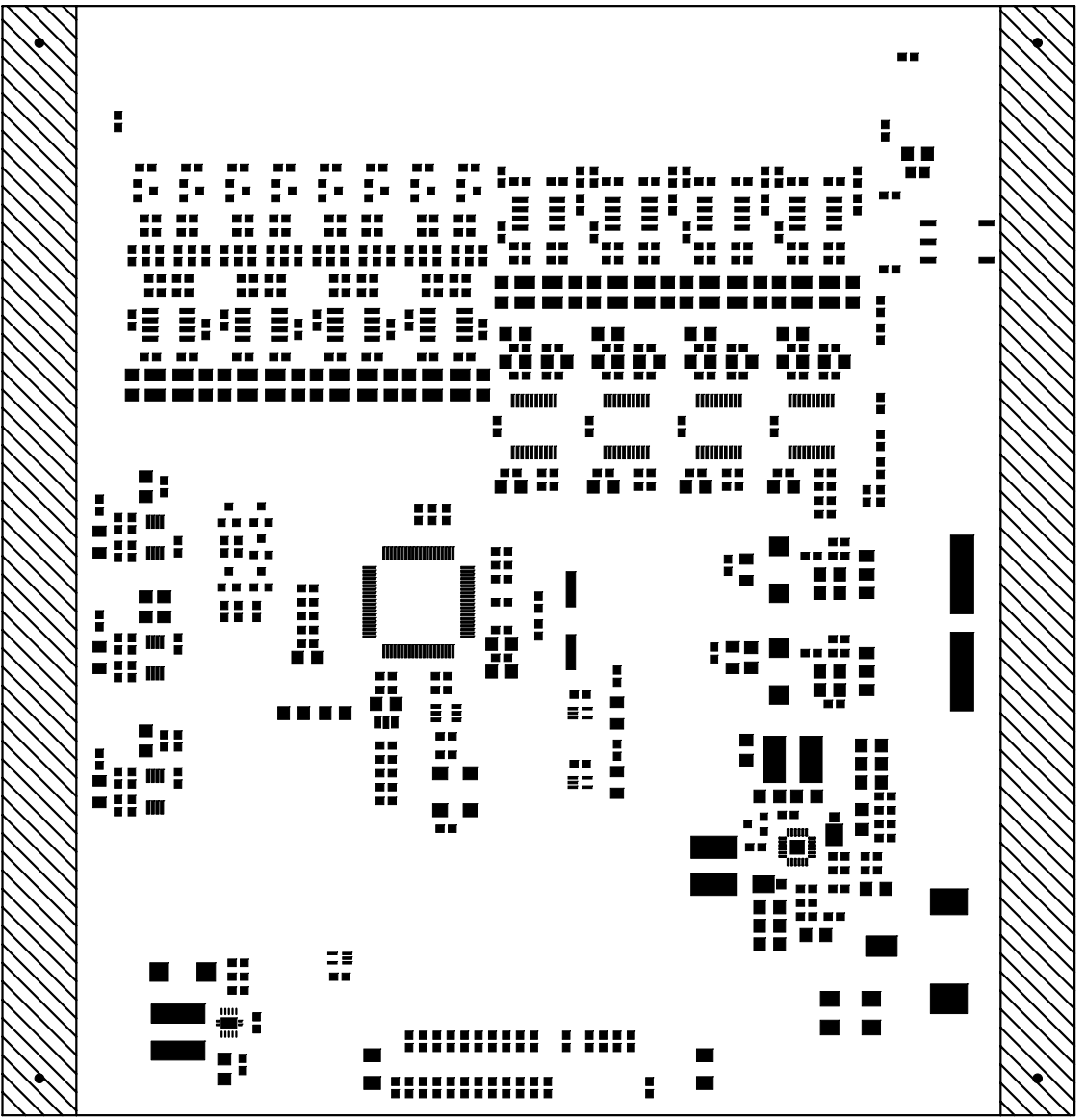
PWB 511061 REV A
7-21-08
TOP SIDE -- LAYER 1



PWB 511061 REV A
 7-21-08
 TOP SIDE SILKSCREEN

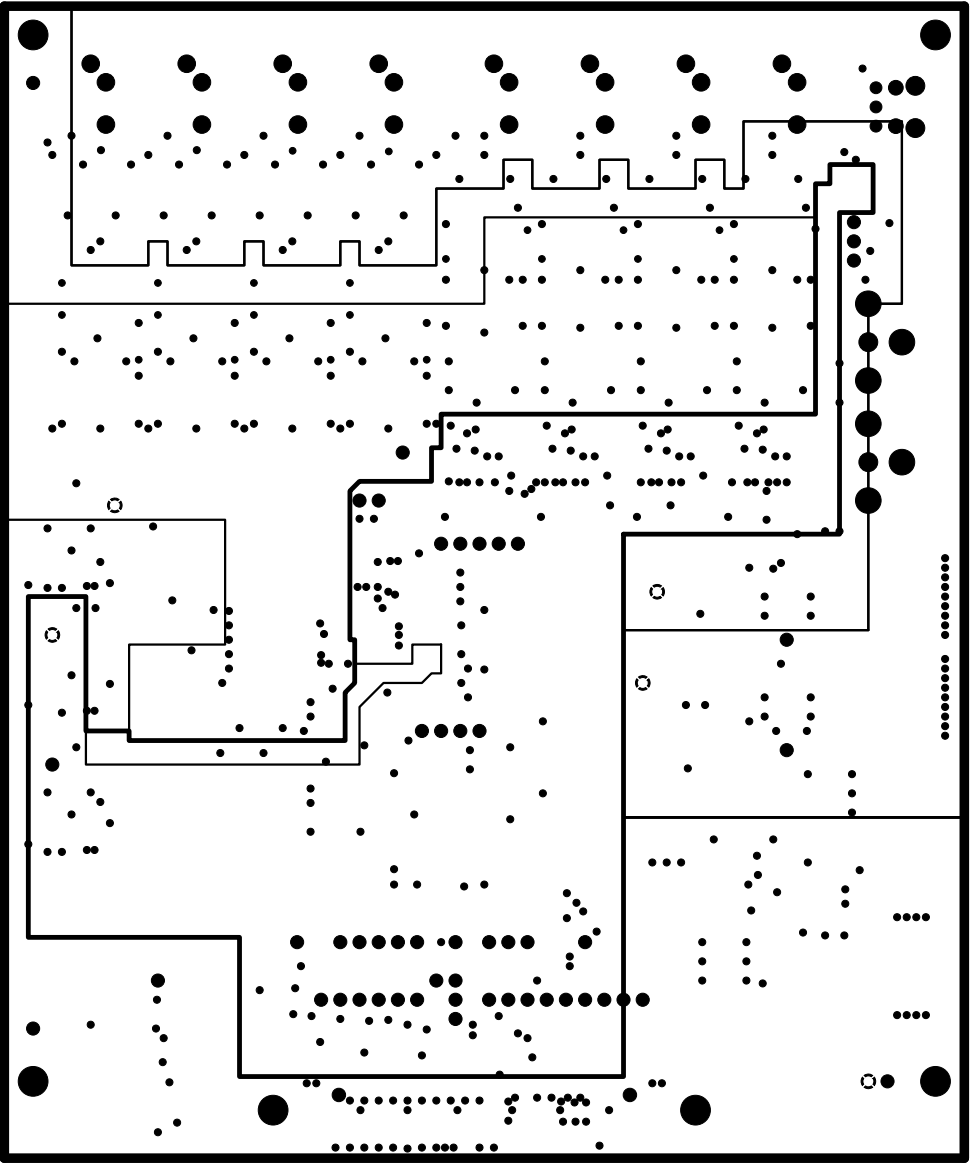


PWB 511061 REV A
7-21-08
TOP SIDE SOLDERMASK



PWB 511061 REV A
7-21-08
TOP SIDE SOLDERPASTE

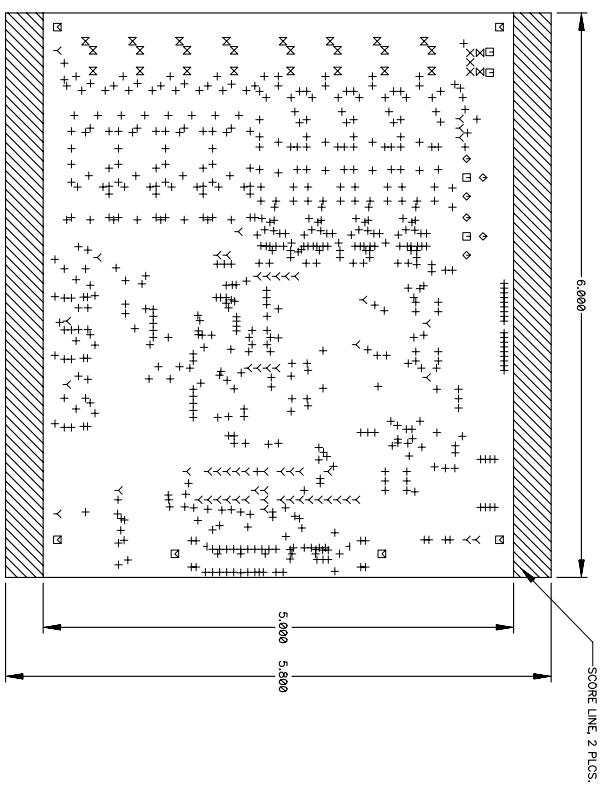
SQUEEGEE SIDE
LEADING EDGE →
↑ OPERATOR EDGE



PWB 511061 REV A
7-21-08
VCC PLANE - LAYER 3

NOTES: UNLESS OTHERWISE SPECIFIED

- 1 MATERIAL: HIGH TEMP FR4 (G>=170). THICKNESS: .062 ;
- 2 DIMENSIONS APPLY TO THE CENTER OF HOLES AND PADS.
- 3 MINIMUM COPPER WALL THICKNESS SHALL BE .001 FOR ALL PLATED THRU HOLES.
- 4 ALL ARTWORK VIEWED FROM COMPONENT SIDE ARE AFTER PLATING.
- 5 MAXIMUM ALLOWABLE LINE REDUCTIONS DUE TO PIN HOLES, NICKS AND LINE SHRINKAGE IS TO BE 20%.
- 7 INTERNAL AND EXTERNAL CORNERS TO BE .50R RADIUS MAX AT SHOP OPTION.
- 8 EDGE CONNECTOR TABS ARE TO BE ELECTROPLATED TO A MINIMUM THICKNESS OF .0005 GOLD OVER A MINIMUM THICKNESS OF .0001 NICKEL.
- 9 SOLDER MASK SHALL BE LIQUID PHOTOIMAGEABLE MATTE FINISH WITH A THICKNESS NOT TO EXCEED 1.5 MILS AND SHALL BE APPLIED TO BOTH SIDES OF BOARD OVER BARE COPPER PER IPC-SM-840, CLASS 2.
- 10 SOLDER MASK COLOR: GREEN.
- 11 EXPOSED CONDUCTOR AREAS TO BE FINISHED WITH ELECTROLESS NICKEL THICKNESS .000250 MINIMUM PLUS IMMERSION GOLD THICKNESS .000205 MINIMUM.
- 12 SILKSCREEN WITH WHITE EPOXY BASED INK PER SILKSCREEN ARTWORK.
- 13 BOARD IS TO BE 100% ELECTRICALLY TESTED.
- 14 CONTROLLED IMPEDANCE OF 55 OHMS +/- 10 OHMS TO BE MATCHED ON ALL SIGNAL LAYERS ON 8 MIL TRACES.



Drill Table

Hole Dia (Inch)	Symbol	Quantity	Plated
0.012	+	601	Yes
0.031	X	3	Yes
0.038	Y	57	Yes
0.041	T	2	No
0.046	X	2	Yes
0.062	M	24	Yes
0.068	□	4	Yes
0.104	◇	6	Yes
0.125	⊠	6	Yes

TABLE OF LAYERS

NO.	DESCRIPTION	COPPER WT.
11	TOP SIDE	1/2 OZ
12	GND PLANE	1 OZ
13	VCC PLANE	1 OZ
14	BOTTOM SIDE	1/2 OZ

PWB 511061 REV A
7-21-08
FAB DRAWING

- UNLESS OTHERWISE SPECIFIED
- DIMENSIONS ARE IN INCHES
 - ANGLES +/- .1°
 - TOLERANCES 2 PLACE DECIMALS +/- .010
 - REMOVE ALL BURRS AND SHARP EDGES
 - CONCENTRIC MACHINED DIAMETERS TO 10 RIM
 - DIMENSIONAL LIMITS APPLY AFTER PROCESSES
- HOLE DIAMETER TOLERANCE UNLESS OTHERWISE NOTED IN DRILL TABLE
- ALL PLATED HOLES +/- .004
- ALL NON-PLATED HOLES +/- .003

DWG. NO.	DATE	BY
511061-KRAUSKOPF	7-21-08	
CHK		
ENG.-DSGN		
RON PETERSON	7-21-08	
ENG.-MGR		
QA		
MFG		
RISE		

SPECTRUM DIGITAL
INCORPORATED

PWB: DA830 MULTI-CHANNEL
AUDIO BOARD

SIZE: DRAWING NO 511061

SCALE: NONE

REV: A

SHEET: 1 OF 1

REV	ECN NO. / CLASS	DRAWER / DATE	APPROVED

REV NO.	SH 1	DATE	APPROVED
511061			