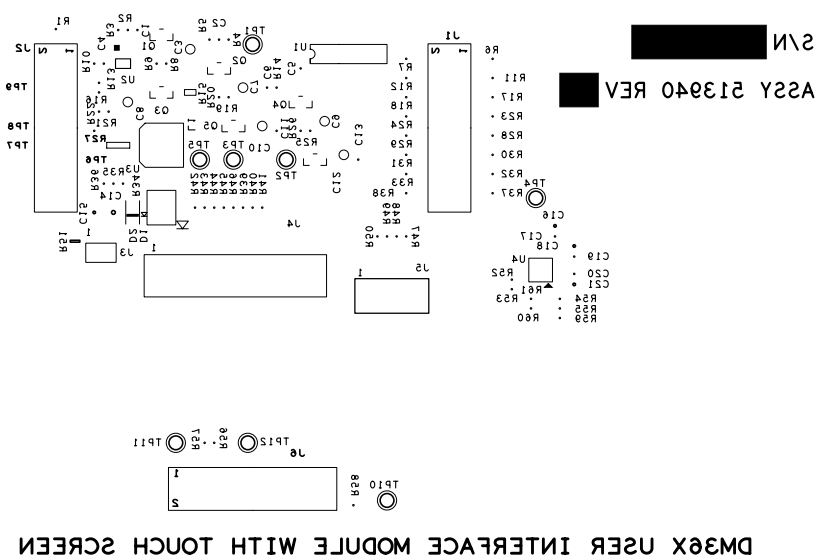
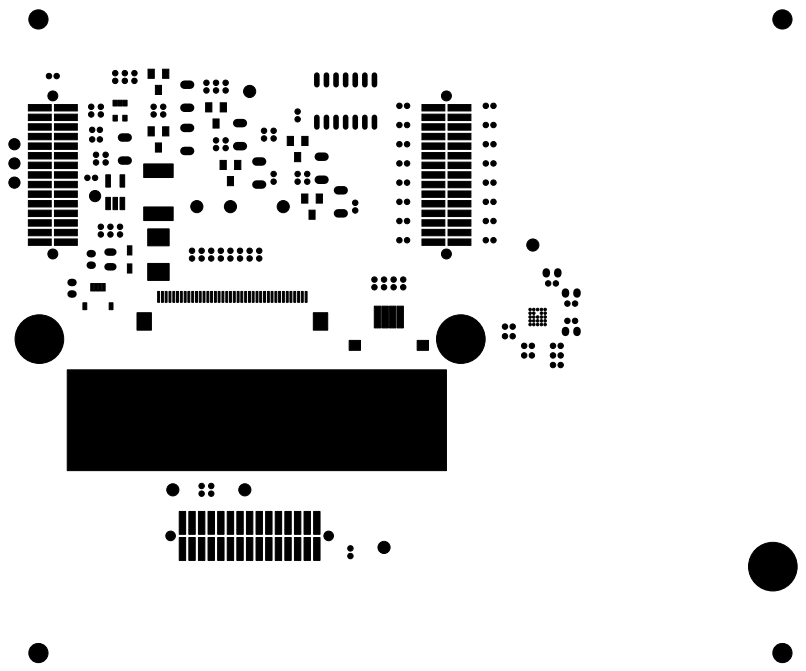


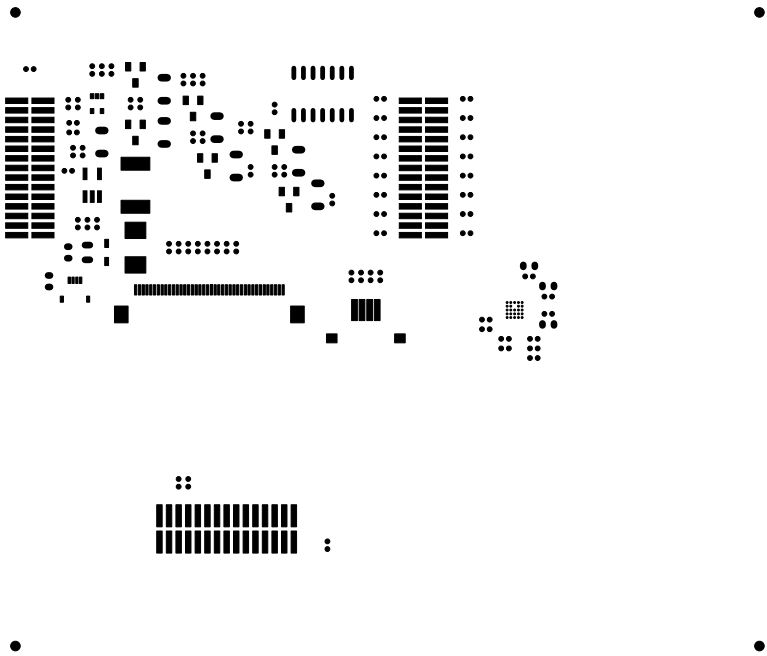
	SPECTRUM DIGITAL	
	LAYER 4 SOLDER	513941 B
	DATE : 09-21-10	



	SPECTRUM DIGITAL	
	BSLK	513941 B
	DATE : 09-21-10	



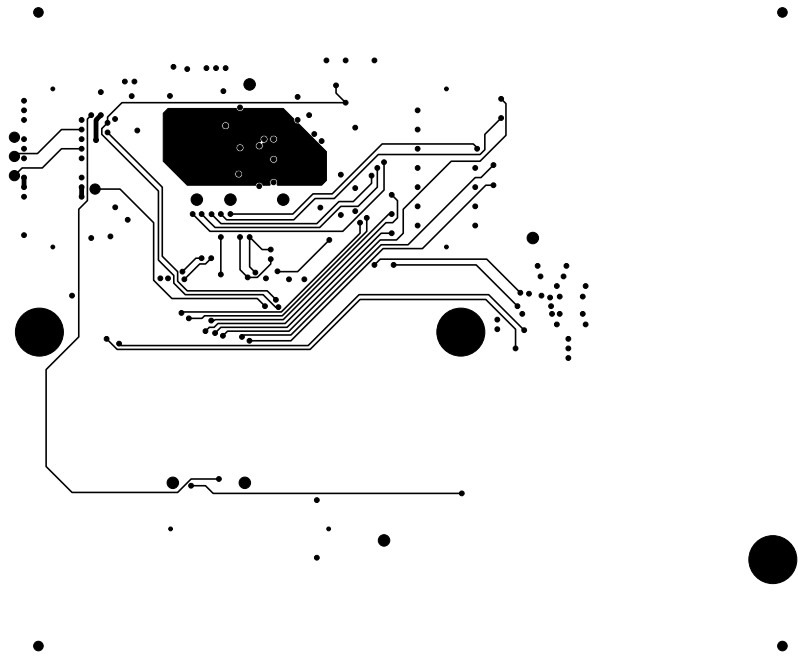
	SPECTRUM DIGITAL	
	SMS	513941 B
	DATE : 09-21-10	



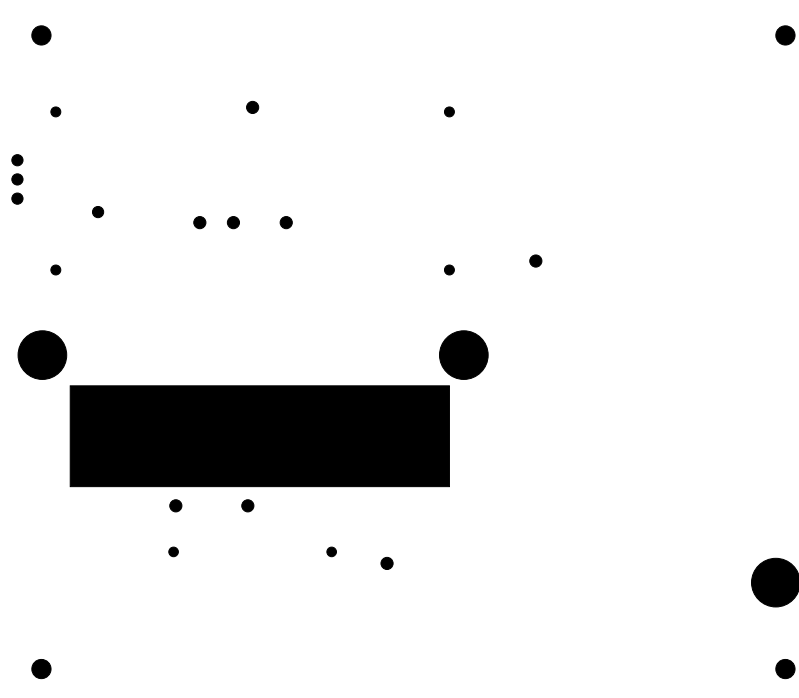
	SPECTRUM DIGITAL	
	SPS	513941 B
	DATE : 09-21-10	



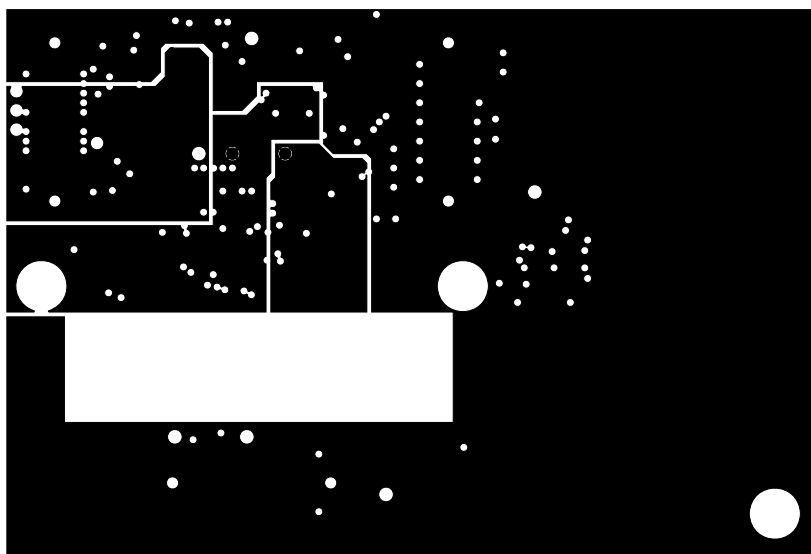
	SPECTRUM DIGITAL	
	LAYER 2 GROUND	513941 B
	DATE : 09-21-10	



	SPECTRUM DIGITAL	
	LAYER 1 COMPONENT	513941 B
	DATE : 09-21-10	

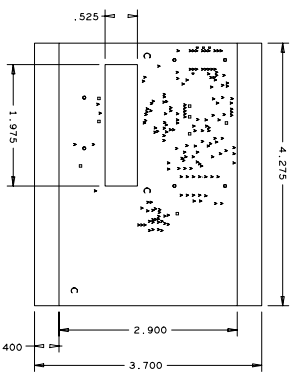


	SPECTRUM DIGITAL	
	SMC	513941 B
	DATE : 09-21-10	



	SPECTRUM DIGITAL	
	LAYER 3 POWER	513941 B
	DATE : 09-21-10	





DRILL CENTER TOP TO BOTTOM			
FIGURE	NO. OF BITS AND IN PLATES	PLATE	QTY
1	15 0	PLATE	100
2	400 0	PLATE	8
3	400 0	PLATE	8
4	27 0	NON-PLATED	8

- SMC
- LAYER 1
- LAYER 2
- LAYER 3
- LAYER 4
- SMS
- BSLK

LAYER SCHEDULE  
SCALE: NONE

8. 50 OHM SINGLE IMPEDANCE APPLIES TO ALL 8 MIL ROUTES.
7. SURFACE FINISH SHALL BE IMMERSION GOLD.
6. FINISHED BOARD SHALL BE FREE OF BURRS ON EDGES.
5. DRC'S MUST BE RUN ON THE GERBERS BEFORE BUILDING BOARDS UNLESS PRIOR APPROVAL IS GIVEN IN WRITING.
4. PLATED THRU HOLE SIZE TOLERANCES SHALL BE +/- .003 INCH.
3. UNPLATED THRU HOLE SIZE TOLERANCES SHALL BE +/- .002 INCH.
2. SOLDERMASK ON BOTH SIDES OF THE BOARD SHALL BE S.M.O.B.C., LPI, COLOR GREEN.
1. COPPER PLATED SURFACE CONDUCTORS SHALL BE THE EQUIVALENT OF 1 OZ. COPPER AFTER PLATING. PLANE LAYERS SHALL BE 1 OZ. COPPER. AVERAGE COPPER ON THE WALL OF THE PLATED HOLE SHALL BE PER IPC CLASS 2.
1. TOTAL BOARD THICKNESS SHALL BE .062 +/- .10% INCHES.
- ALL MATERIAL SHALL BE NEMA GRADE FR-4 OR EQUIVALENT. (Tg>=170 DEG. C)

NOTES: UNLESS OTHERWISE SPECIFIED

DATE	09-21-10	APPROVED		SPECTRUM DIGITAL
DESIGN ENGR		CHECKED	Tom K	
PROJECT ENGR		DRAFTING		
ENGR MGR		ENGR		
NEXT ASSEMBLY		FABRICATION DRAWING, GRAPHIC LCD INTERFACE		MODULE
		SCALE NONE		
		SHEET 1 OF 1		513941 REV B
				TO D

DO NOT SCALE DIMENSIONS