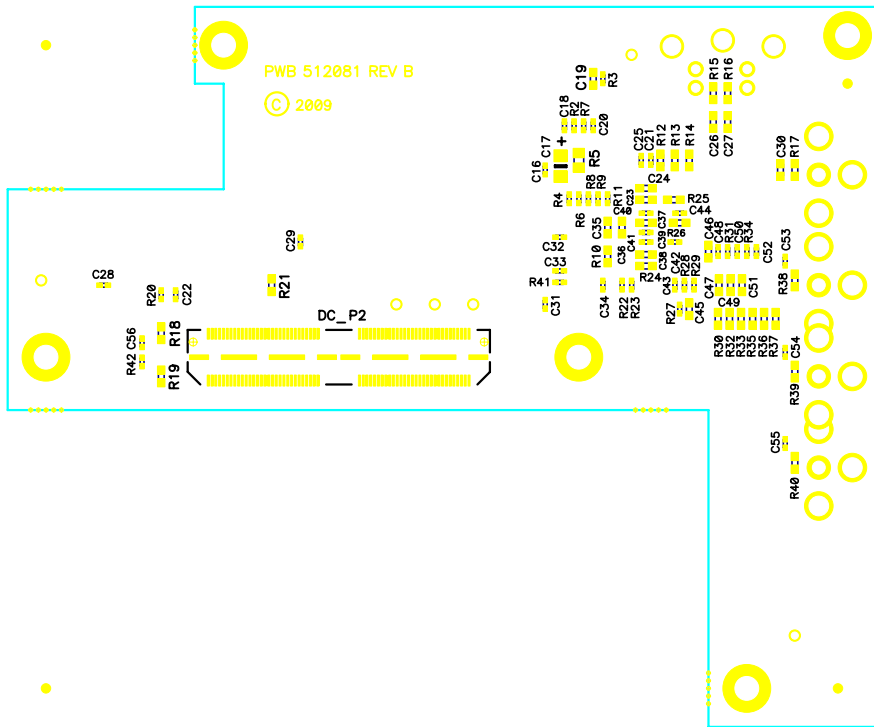
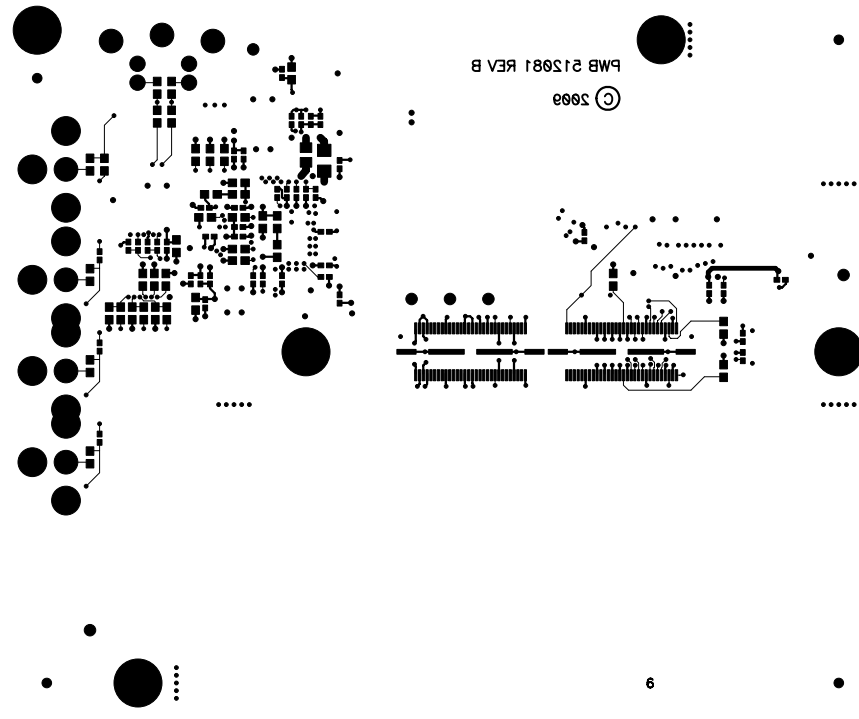


PWB 512081 REV B

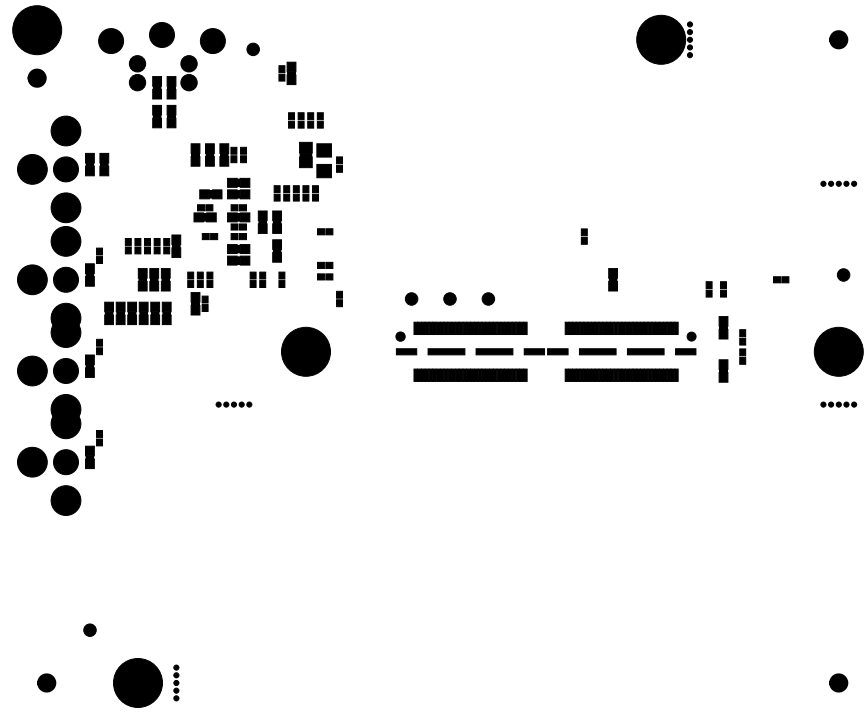
© 2009



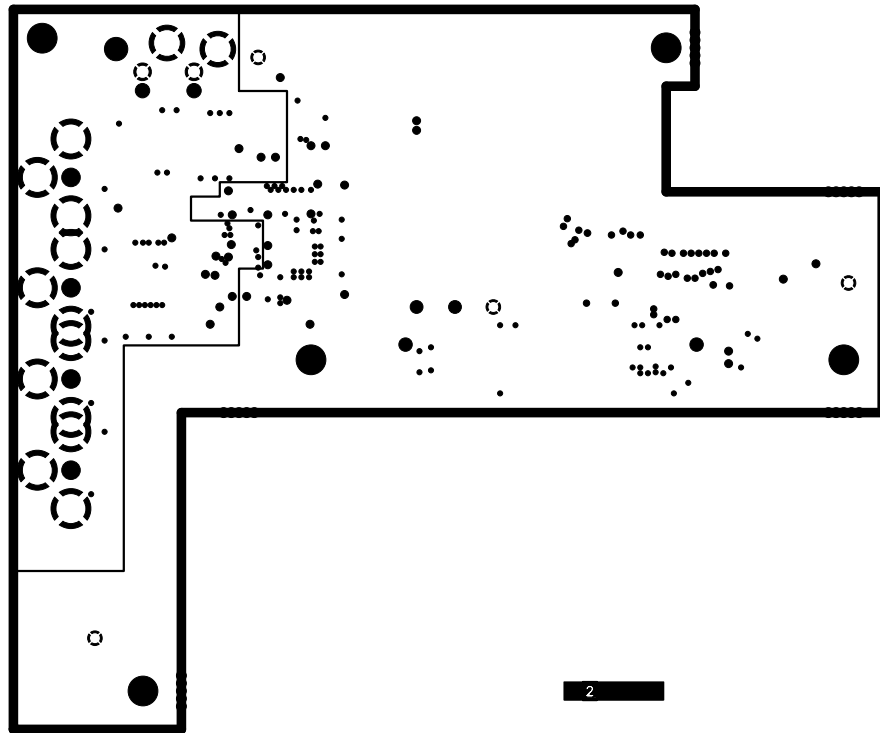


PWB 512081 REV B  
10-27-09  
BOTTOM SIDE - LAYER 8

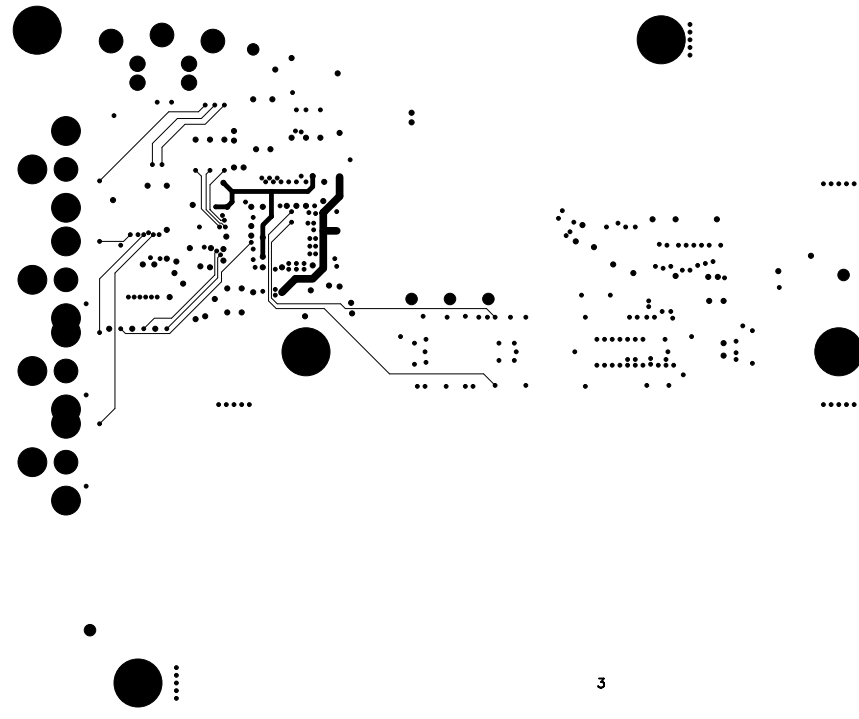




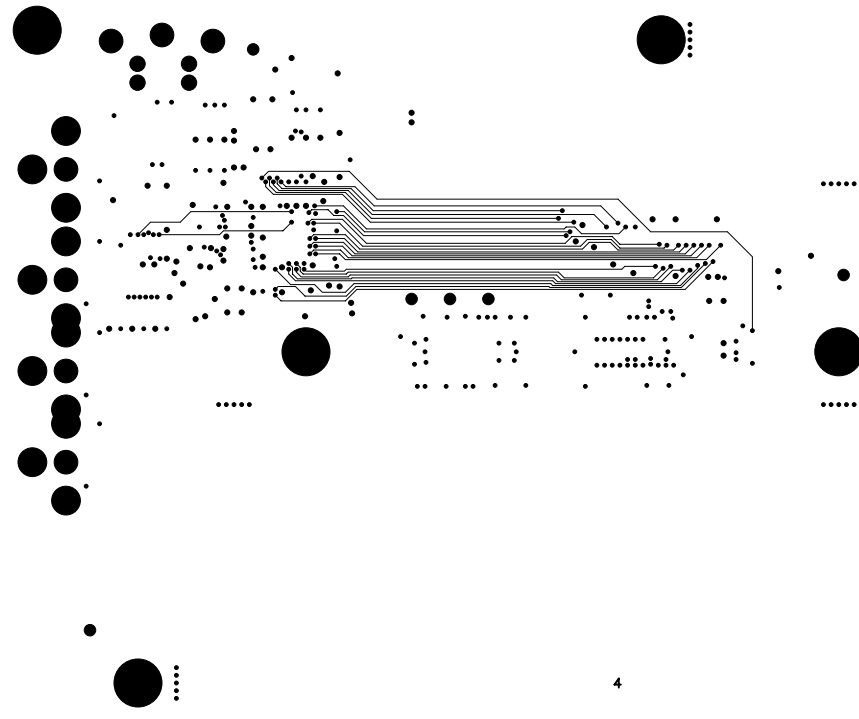
PWB 512081 REV B  
10-27-09  
BOTTOM SIDE SOLDERMASK



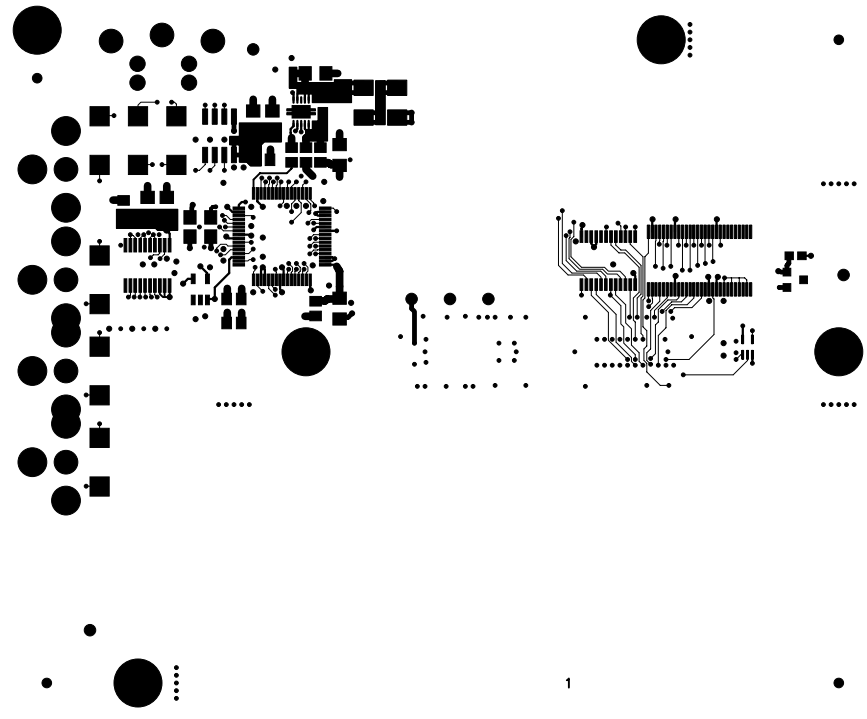
PWB 512081 REV B  
10-27-09  
GND PLANE - LAYER 2



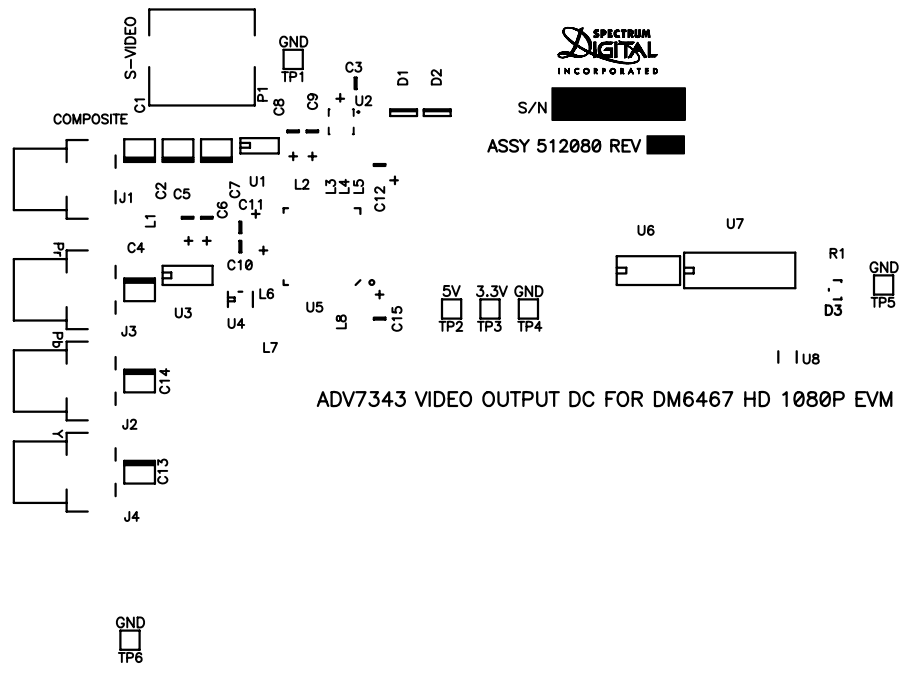
PWB 512081 REV B  
10-27-09  
MID LAYER 1 - LAYER 3



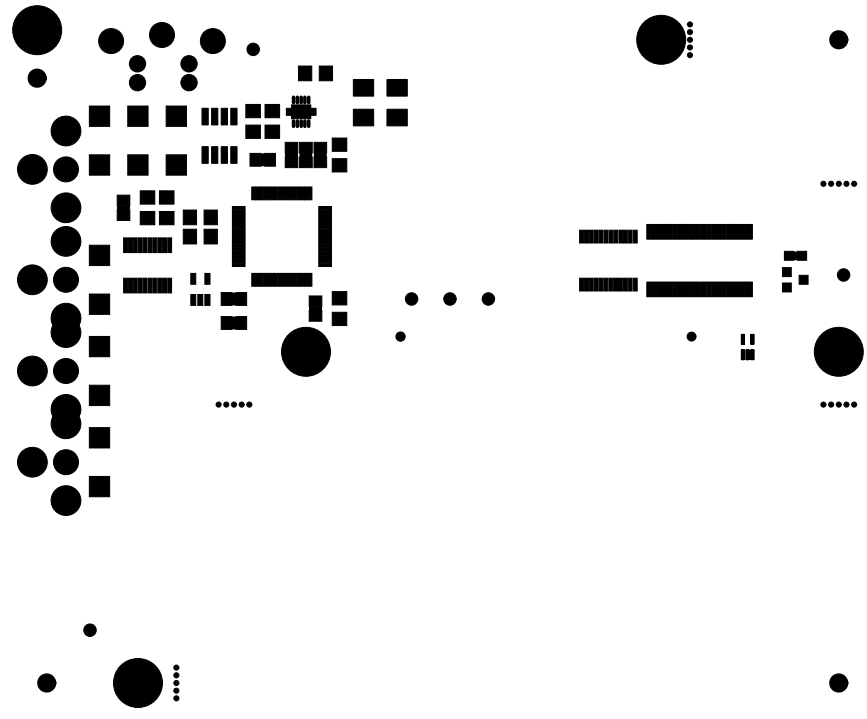
PWB 512081 REV B  
10-27-09  
MID LAYER 2 - LAYER 4



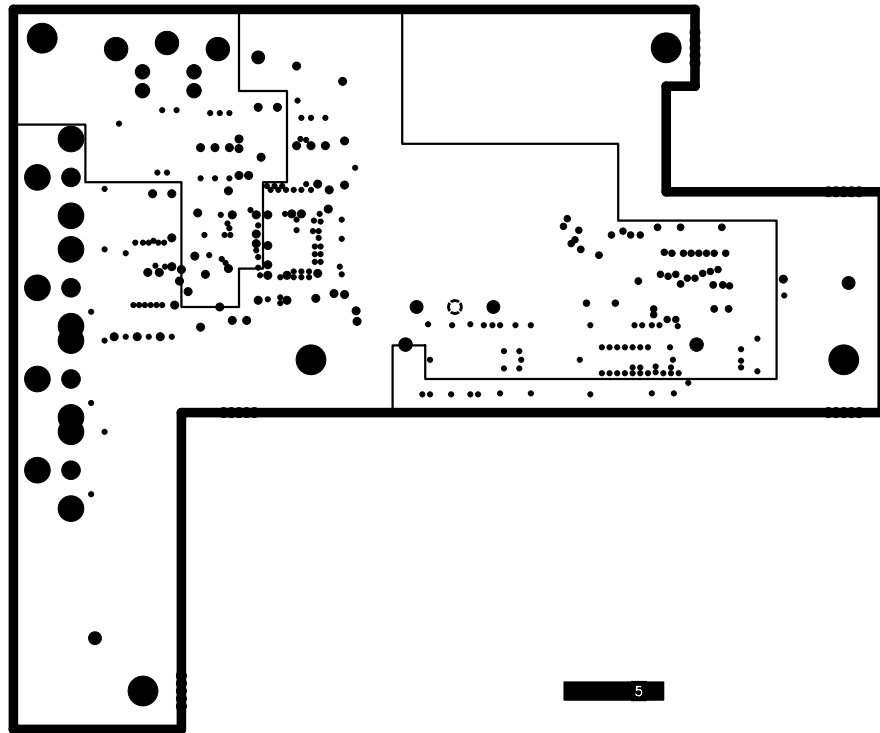
PWB 512081 REV B  
10-27-09  
TOP SIDE - LAYER 1



PWB 512081 REV B  
 10-27-09  
 TOP SIDE SILKSCREEN



PWB 512081 REV B  
10-27-09  
TOP SIDE SOLDERMASK

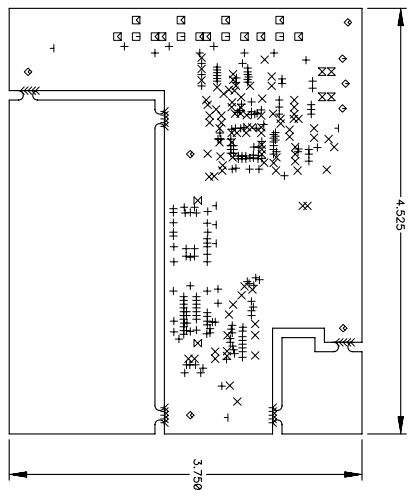


PWB 512081 REV B  
10-27-09  
VCC PLANE - LAYER 5

NOTES: UNLESS OTHERWISE SPECIFIED

- 1 MATERIAL: HIGH TEMP FR4 (TG>=170). THICKNESS: .062.
- 2 DIMENSIONS APPLY TO THE CENTER OF HOLES AND PADS.
- 3 MINIMUM COPPER WALL THICKNESS SHALL BE .001 FOR ALL PLATED THRU HOLES.
- 4 ALL ARTWORK VIEWED FROM COMPONENT SIDE ARE AFTER PLATING.
- 5 MAXIMUM ALLOWABLE LINE REDUCTIONS DUE TO PIN HOLES, NICKS AND LINE SHRINKAGE IS TO BE 20%.
- 6
- 7 INTERNAL AND EXTERNAL CORNERS TO BE .06 RADIUS MAX AT SHIP OPTION.
- 8 EDGE CONNECTION TABS ARE TO BE ELECTROPLATED TO A MINIMUM THICKNESS OF .0005 GOLD OVER A MINIMUM THICKNESS OF .0001 NICKEL.
- 9 SOLDER MASK SHALL BE LIQUID PHOTOIMAGEABLE MATTE FINISH WITH A THICKNESS NOT TO EXCEED 1.5 MILS AND SHALL BE APPLIED TO BOTH SIDES OF BOARD OVER BARE COPPER PER IPC-SM-840, CLASS 2.
- 10 SOLDER MASK COLOR: GREEN.
- 11 EXPOSED CONDUCTOR AREAS TO BE FINISHED WITH ELECTROLESS NICKEL THICKNESS .000050 MINIMUM, PLUS IMMERSION GOLD, THICKNESS .000005 MINIMUM.

- 12 SILKSCREEN WITH WHITE EPOXY BASED INK PER SILKSCREEN ARTWORK.
- 13 BOARD IS TO BE 100% ELECTRICALLY TESTED.
- 14 CONTROLLED IMPEDANCE OF 55 OHMS +/- 10 OHMS TO BE WATCHED ON ALL SIGNAL LAYERS ON 5 MIL TRACES.



PWB 512081 REV B  
10-27-09  
FAB DRAWING

| TABLE OF LAYERS |             |
|-----------------|-------------|
| NO.             | DESCRIPTION |
| 1               | TOP SIDE    |
| 2               | INNER PLANE |
| 3               | MID LAYER 1 |
| 4               | MID LAYER 2 |
| 5               | VCC PLANE   |
| 6               | BOTTOM SIDE |

| Drill Table      |        |          |        |
|------------------|--------|----------|--------|
| Drill Dia (inch) | Symbol | Quantity | Plated |
| 0.010            | +      | 196      | Yes    |
| 0.012            | X      | 92       | Yes    |
| 0.022            | Y      | 25       | No     |
| 0.038            | T      | 6        | Yes    |
| 0.041            | X      | 2        | Yes    |
| 0.046            | M      | 4        | Yes    |
| 0.068            | M      | 4        | Yes    |
| 0.093            | ◇      | 3        | Yes    |
| 0.104            | ◇      | 12       | Yes    |
| 0.125            | ◇      | 5        | Yes    |

UNLESS OTHERWISE SPECIFIED

- DIMENSIONS ARE IN INCHES
- TOLERANCES: ANGLES +/- .1°
- HOLE DIAMETER TOLERANCE
- REMOVE ALL BURRS AND SHARP EDGES
- CONCENTRIC MACHINED DIAMETERS 20/10 R/M
- DIMENSIONAL LIMITS APPLY AFTER PROCESSES

| HOLE DIA | THRU   | THRU | THRU   | THRU |
|----------|--------|------|--------|------|
| 0.13     | + .004 | THRU | + .003 | THRU |
| 0.125    | + .001 | THRU | + .001 | THRU |
| 0.125    | + .001 | THRU | + .001 | THRU |

|           |              |      |          |
|-----------|--------------|------|----------|
| DMN       | OM KRAUSKOPF | DATE | 10-27-09 |
| CHK       |              |      |          |
| ENGR-DSSN | RON PETERSON |      | 10-27-09 |
| ENGR-MGR  |              |      |          |
| QA        |              |      |          |
| MFG       |              |      |          |
| RISE      |              |      |          |

**SPECTRUM DIGITAL**  
INCORPORATED

PWB ADV7343 DAUGHTER CARD FOR DM6467 HD 1080P

SIZE DRAWING NO 512081

SCALE NONE

REV B

SHEET 1 OF 1