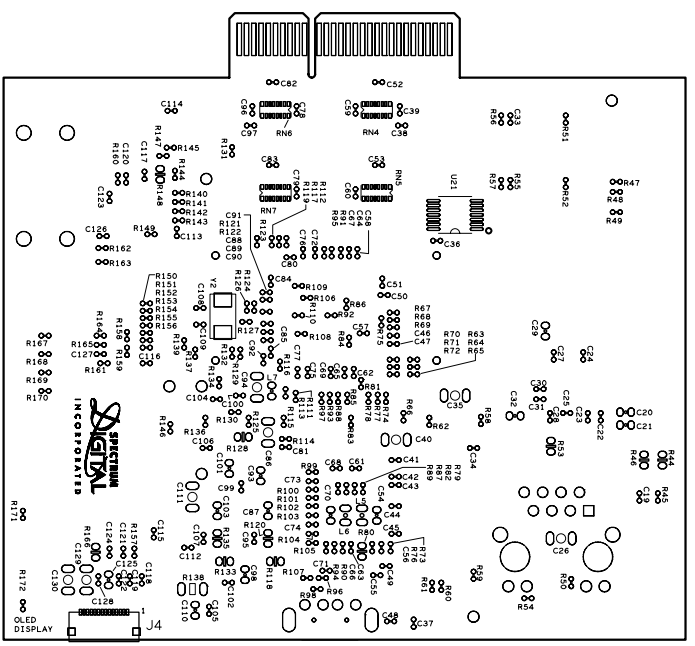
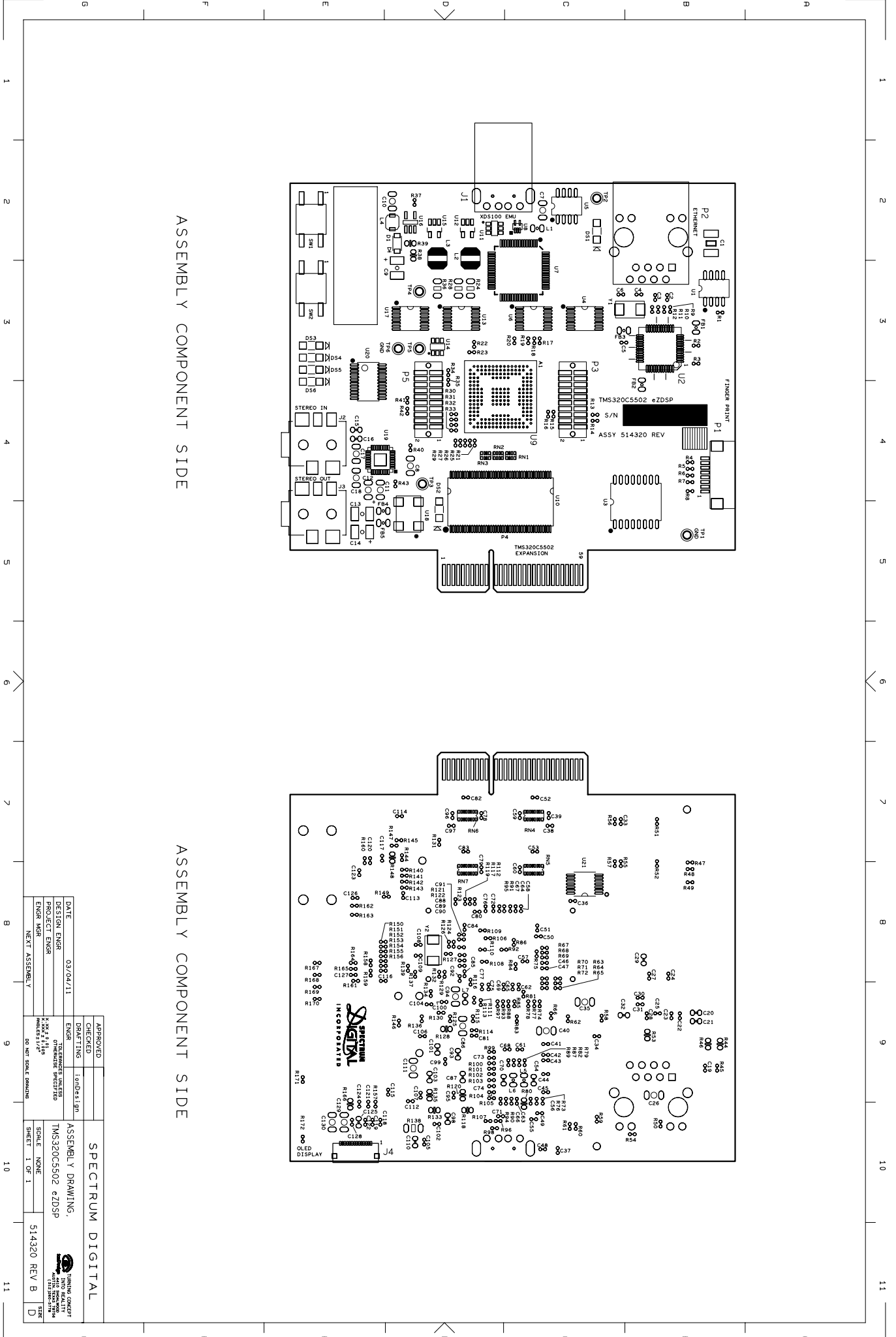


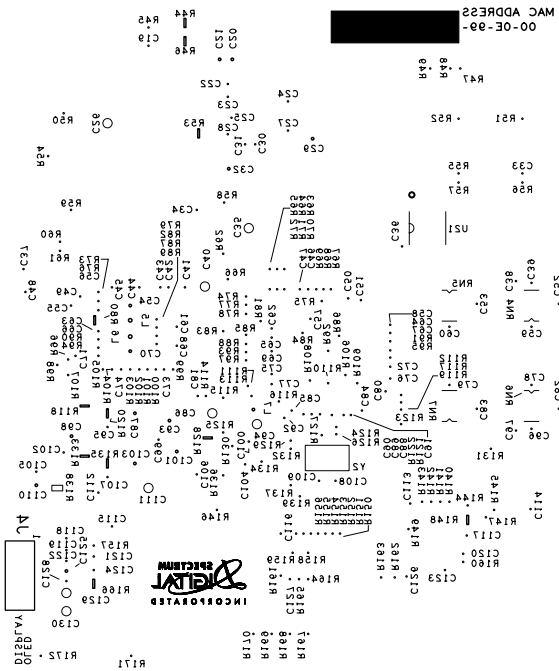
ASSEMBLY COMPONENT SIDE




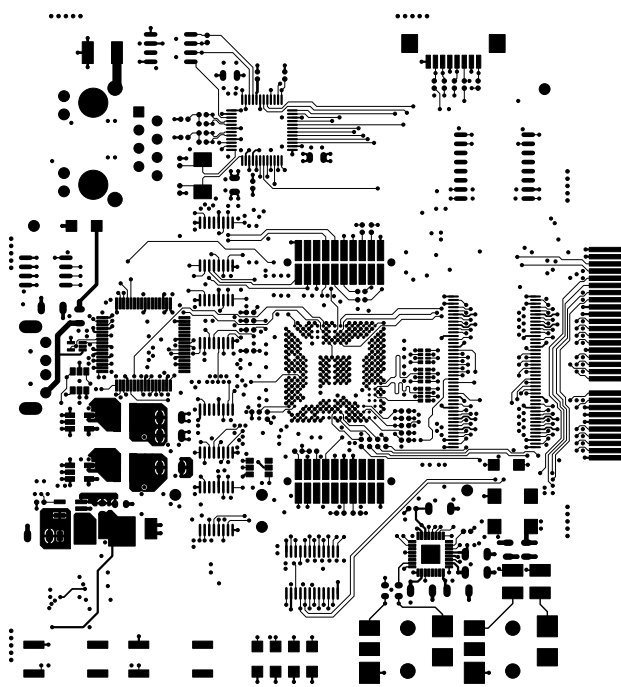
ASSEMBLY COMPONENT SIDE


SPECTRUM DIGITAL	
APPROVED	
CHECKED	
DRAFTING	londex:im
ENGR	
DATE	03/04/11
DESIGN ENGR	
PROJECT ENGR	
ENGR MGR	
NEXT ASSEMBLY	
ASSEMBLY DRAWING, TMS320C5502 eZDSP	
SCALE NONE	
SHEET 1 OF 1	
514320 REV B	
DATE	
TIME	





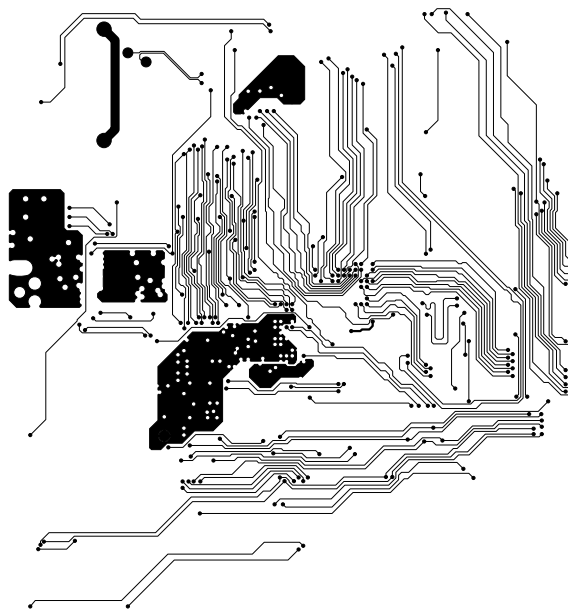
 <p><b>TURNING CONCEPT INTO REALITY</b></p> <p>4410 SHOALWOOD AUSTIN, TEXAS 78756 (512)260-5778</p>	<p><b>SPECTRUM DIGITAL</b></p>	
	<p>BSLK</p>	<p>TMS320C5502 eZDSP 514321 REV. B</p>
	<p>DATE : 03/04/11</p>	




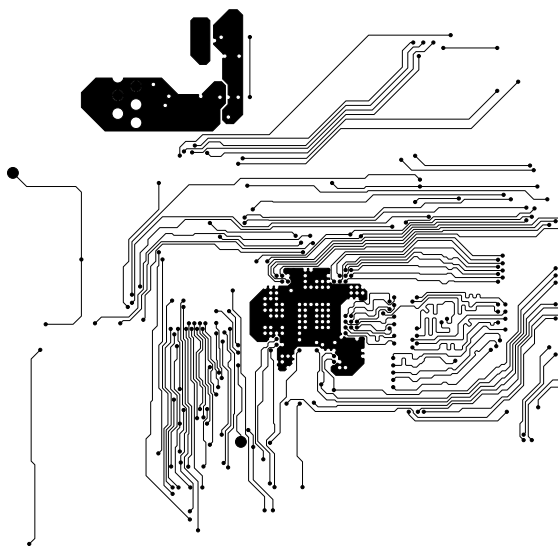
	TURNING CONCEPT INTO REALITY		SPECTRUM DIGITAL	
	4410 SHOALWOOD AUSTIN, TEXAS 78756 (512)260-5778		LAYER 1 COMPONENT	TMS320C5502 eZDSP 514321 REV. B
	DATE : 03/04/11			



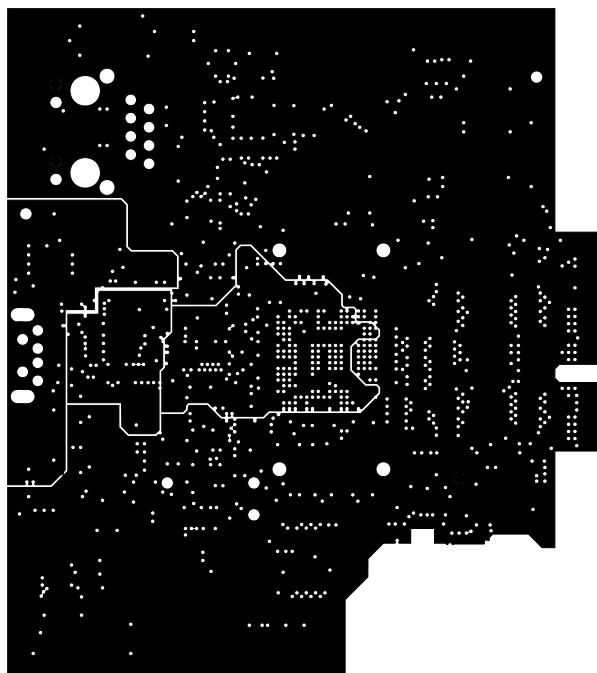
 <b>ionDesign</b>	<b>TURNING CONCEPT INTO REALITY</b>	<b>SPECTRUM DIGITAL</b>	
	4410 SHOALWOOD AUSTIN, TEXAS 78756 (512)260-5778	LAYER 2 GROUND	TMS320C5502 eZDSP 514321 REV. B
		DATE : 03/04/11	



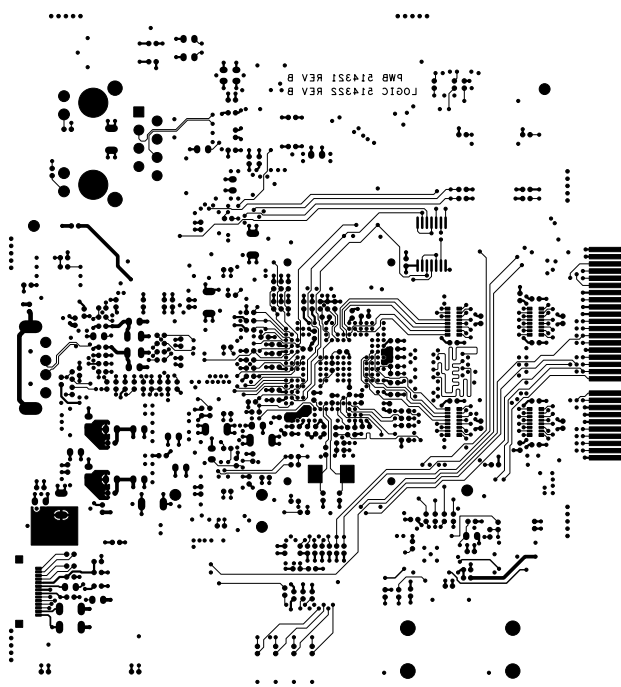
 <b>ionDesign</b>	<b>TURNING CONCEPT INTO REALITY</b>	<b>SPECTRUM DIGITAL</b>	
	4410 SHOALWOOD AUSTIN, TEXAS 78756 (512)260-5778	LAYER 3 SIGNAL	TMS320C5502 eZDSP 514321 REV. B
		DATE : 03/04/11	



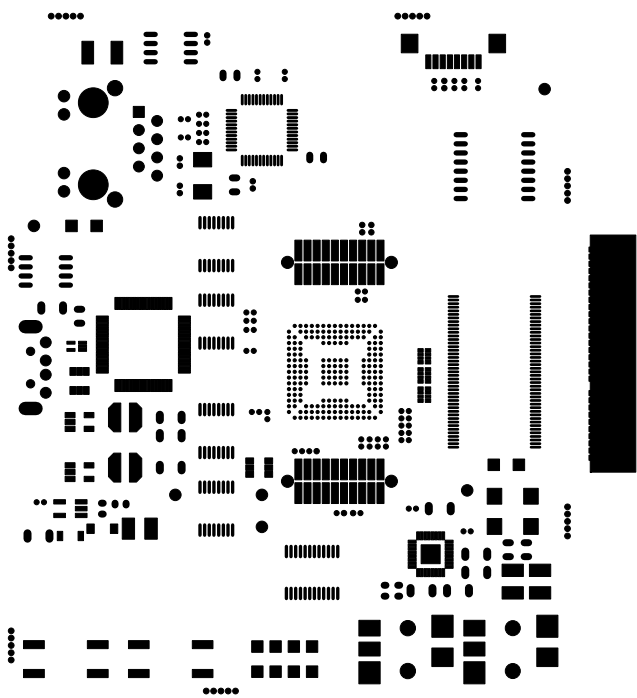
	<b>TURNING CONCEPT INTO REALITY</b>		<b>SPECTRUM DIGITAL</b>	
	4410 SHOALWOOD AUSTIN, TEXAS 78756 (512)260-5778		LAYER 4 SIGNAL	TMS320C5502 eZDSP 514321 REV. B
			DATE : 03/04/11	




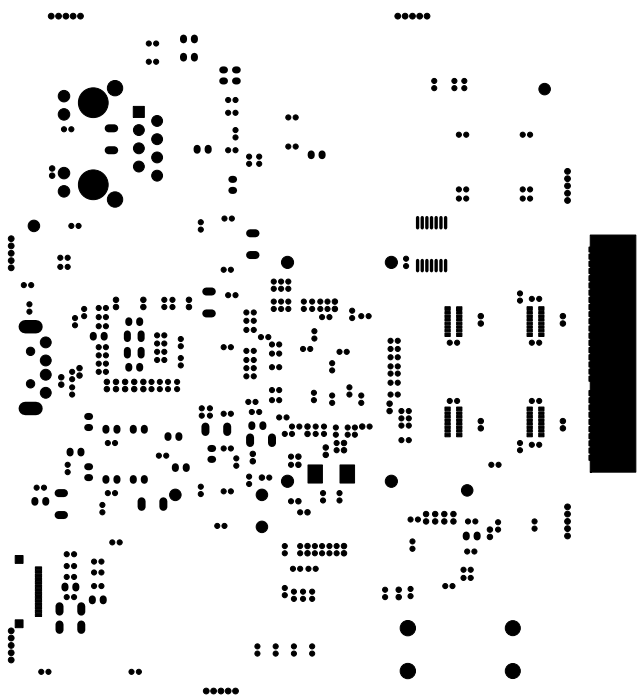
 <b>ionDesign</b>	<b>TURNING CONCEPT INTO REALITY</b>		<b>SPECTRUM DIGITAL</b>	
	4410 SHOALWOOD AUSTIN, TEXAS 78756 (512)260-5778		LAYER 5 POWER	TMS320C5502 eZDSP 514321 REV. B
			DATE : 03/04/11	




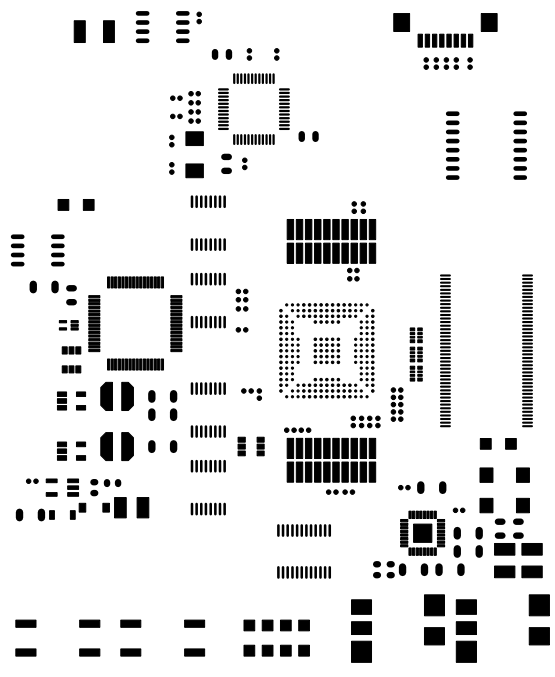
	TURNING CONCEPT INTO REALITY		SPECTRUM DIGITAL	
	4410 SHOALWOOD AUSTIN, TEXAS 78756 (512)260-5778		LAYER 6 SOLDER	TMS320C5502 eZDSP 514321 REV. B
			DATE : 03/04/11	




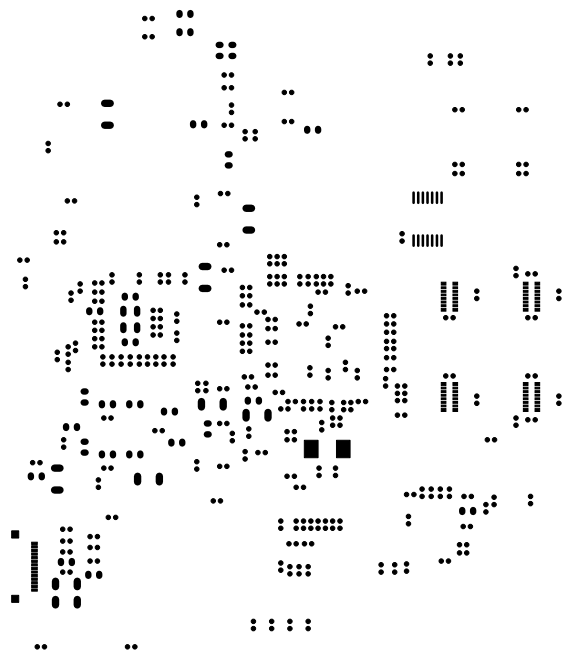
	TURNING CONCEPT INTO REALITY		SPECTRUM DIGITAL	
	4410 SHOALWOOD AUSTIN, TEXAS 78756 (512)260-5778		SMC	TMS320C5502 eZDSP 514321 REV. B
	DATE : 03/04/11			




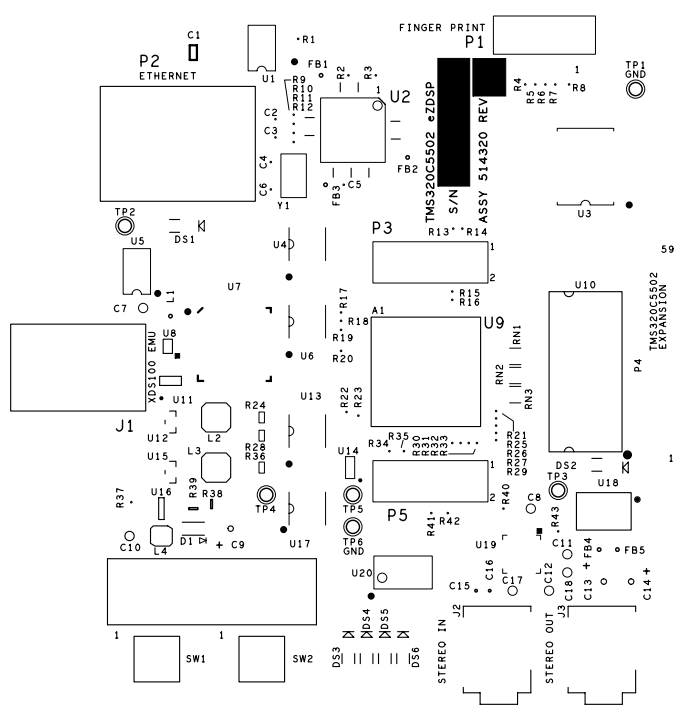
	TURNING CONCEPT INTO REALITY		SPECTRUM DIGITAL	
	4410 SHOALWOOD AUSTIN, TEXAS 78756 (512)260-5778		SMS	TMS320C5502 eZDSP 514321 REV. B
	DATE : 03/04/11			




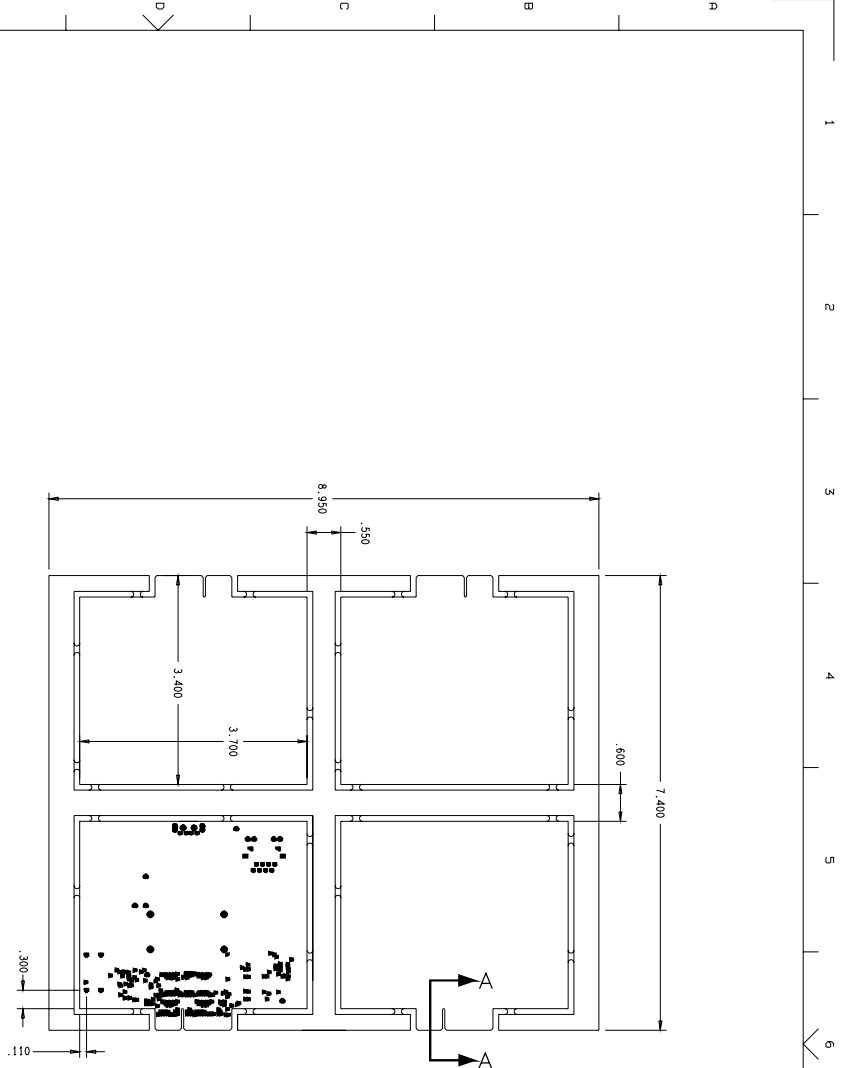
	TURNING CONCEPT INTO REALITY		SPECTRUM DIGITAL	
	4410 SHOALWOOD AUSTIN, TEXAS 78756 (512)260-5778		SPC	TMS320C5502 eZDSP 514321 REV. B
	DATE : 03/04/11			



	TURNING CONCEPT INTO REALITY		SPECTRUM DIGITAL	
	4410 SHOALWOOD AUSTIN, TEXAS 78756 (512)260-5778		SPS	TMS320C5502 eZDSP 514321 REV. B
			DATE : 03/04/11	

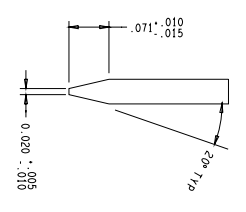


	TURNING CONCEPT INTO REALITY		SPECTRUM DIGITAL	
	4410 SHOALWOOD AUSTIN, TEXAS 78756 (512)260-5778		TSLK	TMS320C5502 eZDSP 514321 REV. B
	DATE : 03/04/11			



DRILL CHART: TOP TO BOTTOM

FIGURE	SIZE	TYPE	PLACEMENT	NOTES
1	0.075	DRILL	PLATED THROUGH HOLES	100% PLATED
2	0.100	DRILL	PLATED THROUGH HOLES	100% PLATED
3	0.125	DRILL	PLATED THROUGH HOLES	100% PLATED
4	0.150	DRILL	PLATED THROUGH HOLES	100% PLATED
5	0.175	DRILL	PLATED THROUGH HOLES	100% PLATED
6	0.200	DRILL	PLATED THROUGH HOLES	100% PLATED
7	0.225	DRILL	PLATED THROUGH HOLES	100% PLATED
8	0.250	DRILL	PLATED THROUGH HOLES	100% PLATED
9	0.275	DRILL	PLATED THROUGH HOLES	100% PLATED
10	0.300	DRILL	PLATED THROUGH HOLES	100% PLATED
11	0.325	DRILL	PLATED THROUGH HOLES	100% PLATED
12	0.350	DRILL	PLATED THROUGH HOLES	100% PLATED
13	0.375	DRILL	PLATED THROUGH HOLES	100% PLATED
14	0.400	DRILL	PLATED THROUGH HOLES	100% PLATED
15	0.425	DRILL	PLATED THROUGH HOLES	100% PLATED
16	0.450	DRILL	PLATED THROUGH HOLES	100% PLATED
17	0.475	DRILL	PLATED THROUGH HOLES	100% PLATED
18	0.500	DRILL	PLATED THROUGH HOLES	100% PLATED



10. DIFFERENTIAL PAIR, 4.1 MIL WIDTH AND 4.9 MIL SPACING ARE TO BE CONTROLLED IMPEDANCE OF: 100 OHM +/- 10%
9. DIFFERENTIAL PAIR, 5.1 MIL WIDTH AND 6 MIL SPACING ARE TO BE CONTROLLED IMPEDANCE OF: 90 OHM +/- 10%
8. IMPEDANCE CONTROL TO 50 OHMS FOR 4 MIL TRACES.
7. SURFACE FINISH SHALL BE IMMERSION GOLD.
6. FINISHED BOARD SHALL BE FREE OF BURRS ON EDGES.
5. PLATED THRU HOLE SIZE TOLERANCES SHALL BE +/- .003 INCH. UNPLATED THRU HOLE SIZE TOLERANCES SHALL BE +/- .002 INCH.
4. SOLDERMASK ON BOTH SIDES OF THE BOARD SHALL BE S.M.O.B.C.C. LPT. COLOR GREEN.
3. MINIMUM TRACE AND SPACE SHALL BE .0035 OF AN INCH.
2. COPPER PLATED SURFACE CONDUCTORS SHALL BE THE EQUIVALENT OF 1 OZ. COPPER AFTER PLATING. PLANE LAYERS SHALL BE 1 OZ. COPPER. AVERAGE COPPER ON THE WALL OF THE PLATED HOLE SHALL BE .001 INCH.
1. TOTAL BOARD THICKNESS SHALL BE .062 +/- .007 INCHES. ALL MATERIAL SHALL BE NEMA GRADE FR-4 OR EQUIVALENT. (Tg>170 DEG. C)

NOTES: UNLESS OTHERWISE SPECIFIED

DRILL

DATE	03/04/11	APPROVED		<b>SPECTRUM DIGITAL</b> FABRICATION DRAWING. TMS320C5502 eZDSP 1512965-278 1512965-278	
DESIGN ENGR		CHECKED			
PROJECT ENGR		DRAFTING	1:med:1:gn		
ENGR MGR		ENGR			
NEXT ASSEMBLY		DO NOT SCALE DRAWING		SCALE	NONE
				SHEET	1 OF 1
				514321	REV B
					D

1 2 3 4 5 6 7 8 9 10 11